

For Research Use Only

CHD2 Polyclonal antibody

Catalog Number: 21334-1-AP

Featured Product



Basic Information

Catalog Number: 21334-1-AP	GenBank Accession Number: BC020810	Purification Method: Antigen affinity purification
Size: 150ul , Concentration: 600 µg/ml by Nanodrop;	GeneID (NCBI): 1106	Recommended Dilutions: WB 1:1000-1:8000 IHC 1:50-1:500 IF 1:200-1:800
Source: Rabbit	Full Name: chromodomain helicase DNA binding protein 2	
Isotype: IgG	Calculated MW: 1828 aa, 211 kDa	
Immunogen Catalog Number: AG15429	Observed MW: 230-250 kDa	

Applications

Tested Applications:

IF, IHC, WB, ELISA

Species Specificity:

human, rat

Note-IHC: suggested antigen retrieval with TE buffer pH 9.0; (*) Alternatively, antigen retrieval may be performed with citrate buffer pH 6.0

Positive Controls:

WB : HEK-293 cells, Jurkat cells, K-562 cells

IHC : rat brain tissue,

IF : HeLa cells,

Background Information

Chromodomain helicase DNA binding protein 2 (CHD2), a member of the sucrose nonfermenting (SNF-2) protein family of epigenetic regulators, which use the energy from ATP hydrolysis to change nucleosome positioning, composition and chromatin structure (PMID: 33435571). CHD2 protein plays a critical role in embryonic development, tumor suppression and survival (PMID: 24834135). In addition, CHD2 has been proposed to prevent breast cancer initiation, and CHD2 mutations are associated with chronic lymphocytic leukemia.

Storage

Storage:

Store at -20°C. Stable for one year after shipment.

Storage Buffer:

PBS with 0.02% sodium azide and 50% glycerol pH 7.3.

Aliquoting is unnecessary for -20°C storage

*** 20ul sizes contain 0.1% BSA

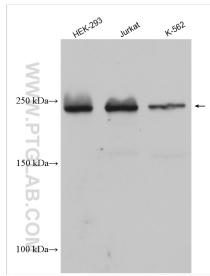
For technical support and original validation data for this product please contact:

T: 1 (888) 4PTGLAB (1-888-478-4522) (toll free in USA), or 1(312) 455-8498 (outside USA)

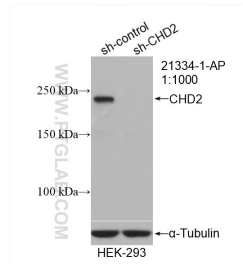
E: proteintech@ptglab.com
W: ptglab.com

This product is exclusively available under Proteintech Group brand and is not available to purchase from any other manufacturer.

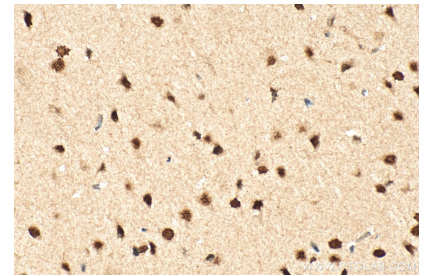
Selected Validation Data



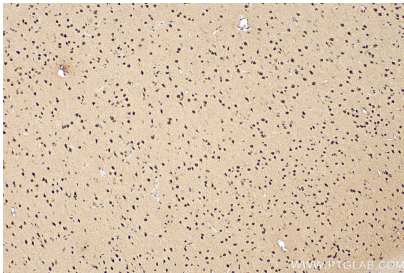
Various lysates were subjected to SDS PAGE followed by western blot with 21334-1-AP (CHD2 antibody) at dilution of 1:4000 incubated at room temperature for 1.5 hours.



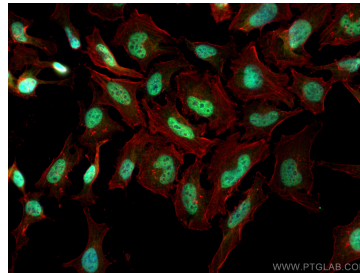
WB result of CHD2 antibody (21334-1-AP; 1:1000; incubated at room temperature for 1.5 hours) with sh-Control and sh-CHD2 transfected HEK-293 cells.



Immunohistochemical analysis of paraffin-embedded rat brain tissue slide using 21334-1-AP (CHD2 antibody) at dilution of 1:200 (under 40x lens). Heat mediated antigen retrieval with Tris-EDTA buffer (pH 9.0).



Immunohistochemical analysis of paraffin-embedded rat brain tissue slide using 21334-1-AP (CHD2 antibody) at dilution of 1:200 (under 10x lens). Heat mediated antigen retrieval with Tris-EDTA buffer (pH 9.0).



Immunofluorescent analysis of (4% PFA) fixed HeLa cells using CHD2 antibody (21334-1-AP) at dilution of 1:400 and CoraLite@488-Conjugated AffiniPure Goat Anti-Rabbit IgG(H+L), CL594-Phalloidin (red).