

For Research Use Only

CPLX4 Polyclonal antibody

Catalog Number: 21222-1-AP

Featured Product



Basic Information

Catalog Number:
21222-1-AP

Size:
150ul, Concentration: 1000 µg/ml by
Nanodrop and 593 µg/ml by Bradford
method using BSA as the standard;

Source:
Rabbit

Isotype:
IgG

Immunogen Catalog Number:
AG15661

GenBank Accession Number:
BC106887

GeneID (NCBI):
339302

Full Name:
complexin 4

Calculated MW:
160 aa, 18 kDa

Observed MW:
21-23 kDa

Purification Method:
Antigen affinity purification

Recommended Dilutions:
WB 1:500-1:3000
IP 0.5-4.0 µg for 1.0-3.0 mg of total
protein lysate
IHC 1:50-1:500

Applications

Tested Applications:
IHC, IP, WB, ELISA

Species Specificity:
human, mouse, rat

**Note-IHC: suggested antigen retrieval with
TE buffer pH 9.0; (*) Alternatively, antigen
retrieval may be performed with citrate
buffer pH 6.0**

Positive Controls:

WB: Y79 cells,

IP: Y79 cells,

IHC: mouse eye tissue, human brain tissue

Background Information

Storage

Storage:

Store at -20°C. Stable for one year after shipment.

Storage Buffer:

PBS with 0.02% sodium azide and 50% glycerol pH 7.3.

Aliquoting is unnecessary for -20°C storage

*** 20ul sizes contain 0.1% BSA

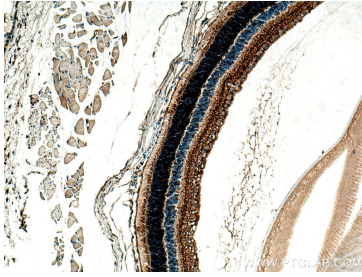
For technical support and original validation data for this product please contact:

T: 1 (888) 4PTGLAB (1-888-478-4522) (toll free
in USA), or 1(312) 455-8498 (outside USA)

E: proteintech@ptglab.com
W: ptglab.com

This product is exclusively available under Proteintech Group brand and is not available to purchase from any other manufacturer.

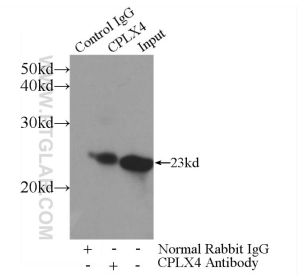
Selected Validation Data



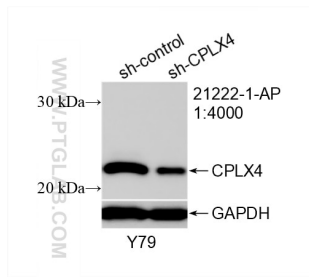
Immunohistochemical analysis of paraffin-embedded mouse eye tissue slide using 21222-1-AP (CPLX4 antibody) at dilution of 1:200 (under 10x lens). Heat mediated antigen retrieval with Tris-EDTA buffer (pH 9.0).



Y79 cells were subjected to SDS PAGE followed by western blot with 21222-1-AP (CPLX4 antibody) at dilution of 1:1500 incubated at room temperature for 1.5 hours.



IP Result of anti-CPLX4 (IP:21222-1-AP, 3ug; Detection:21222-1-AP 1:1000) with Y79 cells lysate 960ug.



WB result of CPLX4 antibody (21222-1-AP; 1:400; incubated at room temperature for 1.5 hours) with sh-Control and sh-CPLX4 transfected Y79 cells.