

For Research Use Only

CCDC25 Polyclonal antibody

Catalog Number: 21209-1-AP

Featured Product

6 Publications



Basic Information

| | | |
|---|---|--|
| Catalog Number: 21209-1-AP | GenBank Accession Number: BC032588 | Purification Method: Antigen affinity purification |
| Size: 150ul, Concentration: 900 µg/ml by Nanodrop and 447 µg/ml by Bradford method using BSA as the standard; | GeneID (NCBI): 55246 | Recommended Dilutions: WB 1:500-1:3000 |
| Source: Rabbit | Full Name: coiled-coil domain containing 25 | |
| Isotype: IgG | Calculated MW: 208 aa, 24 kDa | |
| Immunogen Catalog Number: AG15593 | Observed MW: 24-26 kDa | |

Applications

| | |
|---|---|
| Tested Applications: WB, ELISA | Positive Controls: WB: A549 cells, HeLa cells, Jurkat cells, K-562 cells, MCF-7 cells |
| Cited Applications: IF, IHC, IP, WB | |
| Species Specificity: human | |
| Cited Species: human, mouse | |

Background Information

Notable Publications

| Author | Pubmed ID | Journal | Application |
|---------------|-----------|---------------|-------------|
| Yiwen Lu | 34616019 | Nat Cell Biol | WB,IF |
| Linbin Yang | 32528174 | Nature | IF,WB |
| Zhenzhen Qian | 38236371 | FASEB J | IP |

Storage

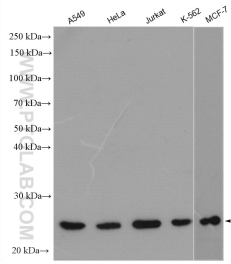
Storage:
Store at -20°C. Stable for one year after shipment.
Storage Buffer:
PBS with 0.02% sodium azide and 50% glycerol pH 7.3.
Aliquoting is unnecessary for -20°C storage

*** 20ul sizes contain 0.1% BSA

For technical support and original validation data for this product please contact:
T: 1 (888) 4PTGLAB (1-888-478-4522) (toll free in USA), or 1(312) 455-8498 (outside USA)
E: proteintech@ptglab.com
W: ptglab.com

This product is exclusively available under Proteintech Group brand and is not available to purchase from any other manufacturer.

Selected Validation Data



Various lysates were subjected to SDS PAGE followed by western blot with 21209-1-AP (CCDC25 antibody) at dilution of 1:1500 incubated at room temperature for 1.5 hours.