

For Research Use Only

GOLGA3 Polyclonal antibody

Catalog Number: 21193-1-AP **8 Publications**



Basic Information

Catalog Number: 21193-1-AP	GenBank Accession Number: BC142658	Purification Method: Antigen affinity purification
Size: 150ul , Concentration: 500 µg/ml by Nanodrop and 353 µg/ml by Bradford method using BSA as the standard;	GeneID (NCBI): 2802	Recommended Dilutions: WB 1:1000-1:6000 IF 1:10-1:100
Source: Rabbit	Full Name: golgi autoantigen, golgin subfamily a, 3	
Isotype: IgG	Calculated MW: 1498 aa, 167 kDa	
Immunogen Catalog Number: AG15531	Observed MW: 167 kDa	

Applications

Tested Applications: IF, WB, ELISA	Positive Controls: WB : L02 cells, HEK-293 cells, HeLa cells, human heart tissue, human testis tissue, PC-3 cells IF : HepG2 cells,
Cited Applications: IF, WB	
Species Specificity: human, mouse	
Cited Species: human, mouse	

Background Information

Notable Publications

Author	Pubmed ID	Journal	Application
Weichao Zhang	36096887	Nat Commun	WB
Gunjan Joshi	24639524	Proc Natl Acad Sci U S A	WB
Tonglin Lu	30845231	PLoS One	WB

Storage

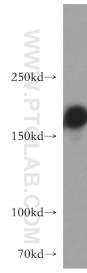
Storage:
Store at -20°C. Stable for one year after shipment.
Storage Buffer:
PBS with 0.02% sodium azide and 50% glycerol pH 7.3.
Aliquoting is unnecessary for -20°C storage

*** 20ul sizes contain 0.1% BSA

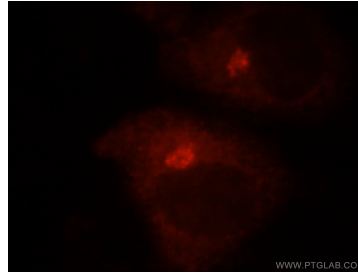
For technical support and original validation data for this product please contact:
T: 1 (888) 4PTGLAB (1-888-478-4522) (toll free in USA), or 1(312) 455-8498 (outside USA)
E: proteintech@ptglab.com
W: ptglab.com

This product is exclusively available under Proteintech Group brand and is not available to purchase from any other manufacturer.

Selected Validation Data



L02 cells were subjected to SDS PAGE followed by western blot with 21193-1-AP (GOLGA3 antibody) at dilution of 1:2000 incubated at room temperature for 1.5 hours.



Immunofluorescent analysis of HepG2 cells, using GOLGA3 antibody 21193-1-AP at 1:25 dilution and Rhodamine-labeled goat anti-rabbit IgG (red).