

For Research Use Only

ELOVL6 Polyclonal antibody

Catalog Number: 21160-1-AP **5 Publications**



Basic Information

Catalog Number: 21160-1-AP	GenBank Accession Number: BC001305	Purification Method: Antigen affinity purification
Size: 150ul , Concentration: 450 µg/ml by Nanodrop;	GeneID (NCBI): 79071	Recommended Dilutions: WB 1:500-1:1000 IHC 1:50-1:500
Source: Rabbit	Full Name: ELOVL family member 6, elongation of long chain fatty acids (FEN1/Elo2, SUR4/Elo3-like, yeast)	
Isotype: IgG	Calculated MW: 265 aa, 31 kDa	
Immunogen Catalog Number: AG14163	Observed MW: 29-32 kDa	

Applications

Tested Applications:
IHC, WB, ELISA

Cited Applications:
WB

Species Specificity:
human, mouse, rat

Cited Species:
human, mouse, rat

Note-IHC: suggested antigen retrieval with TE buffer pH 9.0; (*) Alternatively, antigen retrieval may be performed with citrate buffer pH 6.0

Positive Controls:

WB : mouse liver tissue,

IHC : human hepatocirrhosis tissue, human brain tissue

Background Information

Notable Publications

Author	Pubmed ID	Journal	Application
Mahmood Hassan Dalhat	36149760	Clin Transl Med	WB
Huashan Li	34103895	Drug Des Devel Ther	WB
Nan Li	29857051	Biochim Biophys Acta	WB

Storage

Storage:

Store at -20°C. Stable for one year after shipment.

Storage Buffer:

PBS with 0.02% sodium azide and 50% glycerol pH 7.3.

Aliquoting is unnecessary for -20°C storage

*** 20ul sizes contain 0.1% BSA

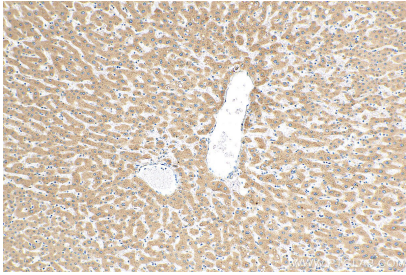
For technical support and original validation data for this product please contact:

T: 1 (888) 4PTGLAB (1-888-478-4522) (toll free in USA), or 1(312) 455-8498 (outside USA)

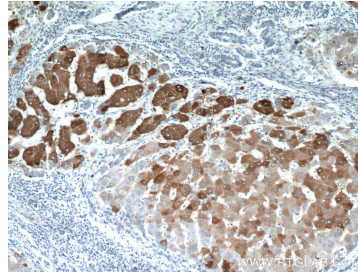
E: proteintech@ptglab.com
W: ptglab.com

This product is exclusively available under Proteintech Group brand and is not available to purchase from any other manufacturer.

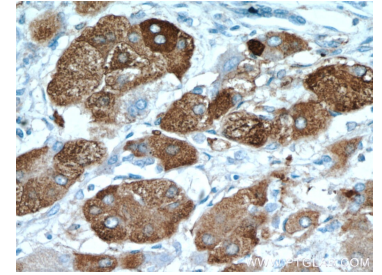
Selected Validation Data



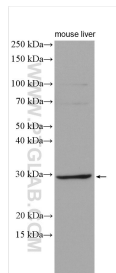
Immunohistochemical analysis of paraffin-embedded human hepatocirrhosis tissue slide using 21160-1-AP (ELOVL6 antibody) at dilution of 1:200 (under 10x lens). Heat mediated antigen retrieval with Tris-EDTA buffer (pH 9.0).



Immunohistochemical analysis of paraffin-embedded human hepatocirrhosis using 21160-1-AP (ELOVL6 antibody) at dilution of 1:100 (under 10x lens).



Immunohistochemical analysis of paraffin-embedded human hepatocirrhosis using 21160-1-AP (ELOVL6 antibody) at dilution of 1:100 (under 40x lens).



mouse liver tissue were subjected to SDS PAGE followed by western blot with 21160-1-AP (ELOVL6 antibody) at dilution of 1:600 incubated at room temperature for 1.5 hours.