

For Research Use Only

# KIR2DS4 Polyclonal antibody

Catalog Number: 21152-1-AP



## Basic Information

<b>Catalog Number:</b> 21152-1-AP	<b>GenBank Accession Number:</b> BC096694	<b>Purification Method:</b> Antigen affinity purification
<b>Size:</b> 150ul , Concentration: 533 µg/ml by Bradford method using BSA as the standard;	<b>GeneID (NCBI):</b> 3809	<b>Recommended Dilutions:</b> WB 1:1000-1:4000 IF 1:10-1:100
<b>Source:</b> Rabbit	<b>Full Name:</b> killer cell immunoglobulin-like receptor, two domains, short cytoplasmic tail, 4	
<b>Isotype:</b> IgG	<b>Calculated MW:</b> 304 aa, 34 kDa	
<b>Immunogen Catalog Number:</b> AG15711	<b>Observed MW:</b> 33 kDa	

## Applications

<b>Tested Applications:</b> IF, WB, ELISA	<b>Positive Controls:</b>
<b>Species Specificity:</b> human	<b>WB :</b> HL-60 cells, Jurkat cells <b>IF :</b> HepG2 cells,

## Background Information

KIR2DS4 (also known as CD158i) is a member of the killer cell immunoglobulin-like receptor (KIR) family. KIRs are transmembrane glycoproteins expressed by natural killer cells and subsets of T cells. KIRs are mainly involved in inhibiting NK killing (inhibitory KIRs) via interaction with MHC class I molecules. KIR2DS4 has been reported to be an activating KIR and recognize the HLA-Cw4 protein.

## Storage

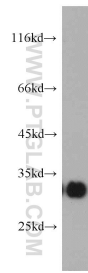
**Storage:**  
Store at -20°C. Stable for one year after shipment.  
**Storage Buffer:**  
PBS with 0.02% sodium azide and 50% glycerol pH 7.3.  
Aliquoting is unnecessary for -20°C storage

\*\*\* 20ul sizes contain 0.1% BSA

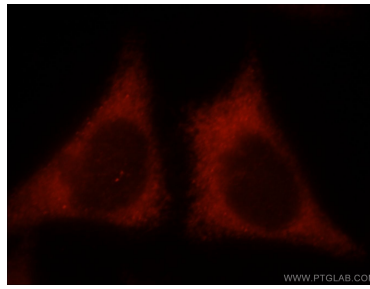
For technical support and original validation data for this product please contact:  
T: 1 (888) 4PTGLAB (1-888-478-4522) (toll free in USA), or 1(312) 455-8498 (outside USA)  
E: proteintech@ptglab.com  
W: ptglab.com

This product is exclusively available under Proteintech Group brand and is not available to purchase from any other manufacturer.

## Selected Validation Data



HL-60 cells were subjected to SDS PAGE followed by western blot with 21152-1-AP (KIR2DS4 antibody) at dilution of 1:500 incubated at room temperature for 1.5 hours.



Immunofluorescent analysis of HepG2 cells, using KIR2DS4 antibody 21152-1-AP at 1:25 dilution and Rhodamine-labeled goat anti-rabbit IgG (red).