

For Research Use Only

MAN2A1 Polyclonal antibody

Catalog Number: 21132-1-AP



Basic Information

Catalog Number: 21132-1-AP	GenBank Accession Number: BC142656	Purification Method: Antigen affinity purification
Size: 150ul , Concentration: 350 µg/ml by Nanodrop and 267 µg/ml by Bradford method using BSA as the standard;	GeneID (NCBI): 4124	Recommended Dilutions: IHC 1:50-1:500 IF 1:20-1:200
Source: Rabbit	Full Name: mannosidase, alpha, class 2A, member 1	
Isotype: IgG	Calculated MW: 1144 aa, 131 kDa	
Immunogen Catalog Number: AG15536		

Applications

Tested Applications: IF, IHC, ELISA	Positive Controls: IHC : human stomach tissue, mouse stomach tissue IF : HeLa cells,
Species Specificity: human, mouse	
Note-IHC: suggested antigen retrieval with TE buffer pH 9.0; (*) Alternatively, antigen retrieval may be performed with citrate buffer pH 6.0	

Background Information

Storage

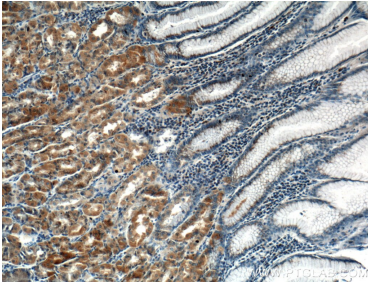
Storage:
Store at -20°C. Stable for one year after shipment.
Storage Buffer:
PBS with 0.02% sodium azide and 50% glycerol pH 7.3.
Aliquoting is unnecessary for -20°C storage

*** 20ul sizes contain 0.1% BSA

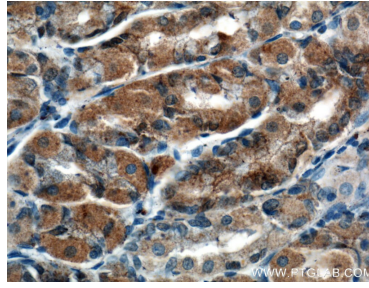
For technical support and original validation data for this product please contact:
T: 1 (888) 4PTGLAB (1-888-478-4522) (toll free in USA), or 1(312) 455-8498 (outside USA)
E: proteintech@ptglab.com
W: ptglab.com

This product is exclusively available under Proteintech Group brand and is not available to purchase from any other manufacturer.

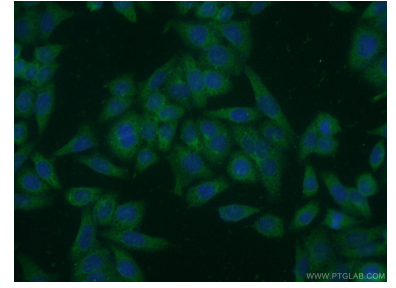
Selected Validation Data



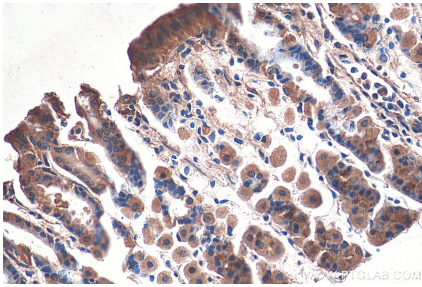
Immunohistochemical analysis of paraffin-embedded human stomach tissue slide using 21132-1-AP (MAN2A1 antibody) at dilution of 1:200 (under 10x lens).



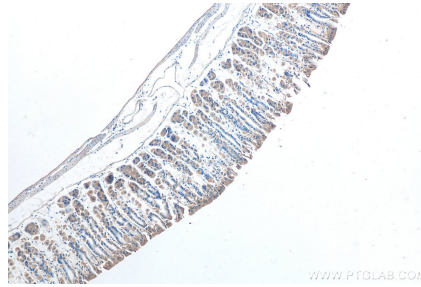
Immunohistochemical analysis of paraffin-embedded human stomach tissue slide using 21132-1-AP (MAN2A1 antibody) at dilution of 1:200 (under 40x lens).



Immunofluorescent analysis of HeLa cells using 21132-1-AP (MAN2A1 antibody) at dilution of 1:50 and Alexa Fluor 488-conjugated AffiniPure Goat Anti-Rabbit IgG(H+L).



Immunohistochemical analysis of paraffin-embedded mouse stomach tissue slide using 21132-1-AP (MAN2A1 antibody) at dilution of 1:200 (under 40x lens).



Immunohistochemical analysis of paraffin-embedded mouse stomach tissue slide using 21132-1-AP (MAN2A1 antibody) at dilution of 1:500 (under 10x lens).