

For Research Use Only

SLC16A4 Polyclonal antibody

Catalog Number: 20889-1-AP **2 Publications**



Basic Information

Catalog Number: 20889-1-AP	GenBank Accession Number: BC021664	Purification Method: Antigen affinity purification
Size: 150ul , Concentration: 280 µg/ml by Bradford method using BSA as the standard;	GeneID (NCBI): 9122	Recommended Dilutions: WB 1:500-1:3000 IHC 1:50-1:500
Source: Rabbit	Full Name: solute carrier family 16, member 4 (monocarboxylic acid transporter 5)	
Isotype: IgG	Calculated MW: 487 aa, 54 kDa	
Immunogen Catalog Number: AG14190	Observed MW: 50 kDa	

Applications

Tested Applications: IHC, WB, ELISA	Positive Controls:
Cited Applications: WB	WB: Jurkat cells,
Species Specificity: human	IHC: human stomach cancer tissue,
Cited Species: human, mouse	

Note-IHC: suggested antigen retrieval with TE buffer pH 9.0; (*) Alternatively, antigen retrieval may be performed with citrate buffer pH 6.0

Background Information

SLC16A4, also named as MCT5, is a proton-linked monocarboxylate transporter which can catalyze the rapid transport across the plasma membrane of many monocarboxylates. It has been reported that SLC16A4 is expressed in human intestine, liver and kidney. (PMID:18996437)

Notable Publications

Author	Pubmed ID	Journal	Application
Bin Zhang	32987196	Int J Biochem Cell Biol	WB
Xiaoliang Han	37098982	Arq Bras Cardiol	WB

Storage

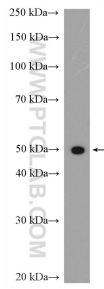
Storage:
Store at -20°C. Stable for one year after shipment.
Storage Buffer:
PBS with 0.02% sodium azide and 50% glycerol pH 7.3.
Aliquoting is unnecessary for -20°C storage

*** 20ul sizes contain 0.1% BSA

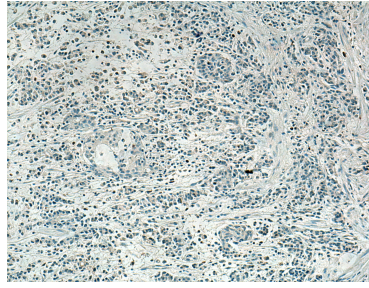
For technical support and original validation data for this product please contact:
T: 1 (888) 4PTGLAB (1-888-478-4522) (toll free in USA), or 1(312) 455-8498 (outside USA)
E: proteintech@ptglab.com
W: ptglab.com

This product is exclusively available under Proteintech Group brand and is not available to purchase from any other manufacturer.

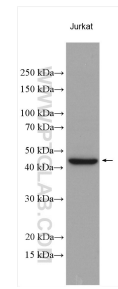
Selected Validation Data



Jurkat cells were subjected to SDS PAGE followed by western blot with 20889-1-AP (SLC16A4 antibody) at dilution of 1:300 incubated at room temperature for 1.5 hours.



Immunohistochemical analysis of paraffin-embedded human stomach cancer tissue slide using 20889-1-AP (SLC16A4 antibody) at dilution of 1:200 (under 10x lens). Heat mediated antigen retrieval with Tris-EDTA buffer (pH 9.0).



Various lysates were subjected to SDS PAGE followed by western blot with 20889-1-AP (SLC16A4 antibody) at dilution of 1:1500 incubated at room temperature for 1.5 hours.