

For Research Use Only

SDF2L1 Polyclonal antibody

Catalog Number: 20888-1-AP **1 Publications**



Basic Information

Catalog Number: 20888-1-AP	GenBank Accession Number: BC006248	Purification Method: Antigen affinity purification
Size: 150ul , Concentration: 600 µg/ml by Nanodrop and 333 µg/ml by Bradford method using BSA as the standard;	GeneID (NCBI): 23753	Recommended Dilutions: WB 1:1000-1:4000 IHC 1:20-1:200
Source: Rabbit	Full Name: stromal cell-derived factor 2-like 1	
Isotype: IgG	Calculated MW: 221 aa, 24 kDa	
Immunogen Catalog Number: AG14160	Observed MW: 24 kDa	

Applications

Tested Applications: IHC, WB, ELISA	Positive Controls: WB : mouse pancreas tissue, rat pancreas tissue, mouse testis tissue, rat testis tissue
Cited Applications: IHC	IHC : human testis tissue, human pancreas tissue, human small intestine tissue
Species Specificity: human, mouse, rat	
Cited Species: human	

Note-IHC: suggested antigen retrieval with TE buffer pH 9.0; (*) Alternatively, antigen retrieval may be performed with citrate buffer pH 6.0

Background Information

Notable Publications

Author	Pubmed ID	Journal	Application
Ming-Ying Ling	36326546	Arch Biochem Biophys	IHC

Storage

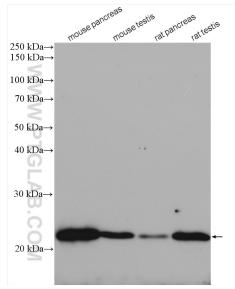
Storage:
Store at -20°C. Stable for one year after shipment.
Storage Buffer:
PBS with 0.02% sodium azide and 50% glycerol pH 7.3.
Aliquoting is unnecessary for -20°C storage

*** 20ul sizes contain 0.1% BSA

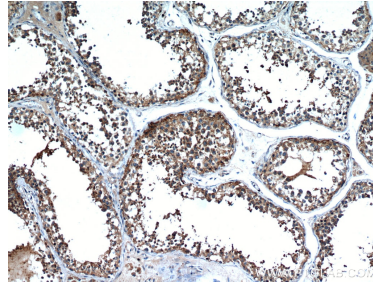
For technical support and original validation data for this product please contact:
T: 1 (888) 4PTGLAB (1-888-478-4522) (toll free in USA), or 1(312) 455-8498 (outside USA) E: proteintech@ptglab.com
W: ptglab.com

This product is exclusively available under Proteintech Group brand and is not available to purchase from any other manufacturer.

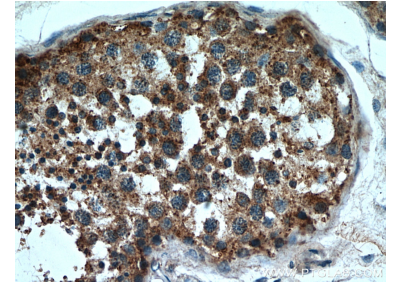
Selected Validation Data



Various lysates were subjected to SDS PAGE followed by western blot with 20888-1-AP (SDF2L1 antibody) at dilution of 1:2000 incubated at room temperature for 1.5 hours.



Immunohistochemical analysis of paraffin-embedded human testis using 20888-1-AP (SDF2L1 antibody) at dilution of 1:50 (under 10x lens).



Immunohistochemical analysis of paraffin-embedded human testis using 20888-1-AP (SDF2L1 antibody) at dilution of 1:50 (under 40x lens).