

For Research Use Only

SLC22A24 Polyclonal antibody

Catalog Number: 20834-1-AP



Basic Information

Catalog Number: 20834-1-AP	GenBank Accession Number: BC034394	Purification Method: Antigen affinity purification
Size: 150ul , Concentration: 350 µg/ml by Nanodrop;	GeneID (NCBI): 283238	Recommended Dilutions: WB 1:500-1:1000
Source: Rabbit	Full Name: solute carrier family 22, member 24	
Isotype: IgG	Calculated MW: 322 aa, 36 kDa	
Immunogen Catalog Number: AG14907	Observed MW: 62 kDa	

Applications

Tested Applications: WB, ELISA	Positive Controls: WB : H9C2 cells, mouse brain tissue, mouse kidney tissue
Species Specificity: human	

Background Information

SLC22A24, an orphan transporter, belongs to the SLC22 family, which transports organic ions. SLC22A24 is conserved among higher order primates, but has diverged within lower level primates and other mammals.

Storage

Storage:
Store at -20°C. Stable for one year after shipment.
Storage Buffer:
PBS with 0.02% sodium azide and 50% glycerol pH 7.3.
Aliquoting is unnecessary for -20°C storage

*** 20ul sizes contain 0.1% BSA

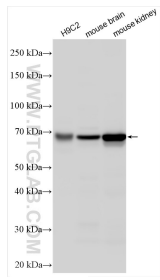
For technical support and original validation data for this product please contact:

T: 1 (888) 4PTGLAB (1-888-478-4522) (toll free in USA), or 1(312) 455-8498 (outside USA)

E: proteintech@ptglab.com
W: ptglab.com

This product is exclusively available under Proteintech Group brand and is not available to purchase from any other manufacturer.

Selected Validation Data



Various lysates were subjected to SDS PAGE followed by western blot with 20834-1-AP (SLC22A24 antibody) at dilution of 1:500 incubated at room temperature for 1.5 hours.