

For Research Use Only

# LIMS1 Polyclonal antibody

Catalog Number: 20772-1-AP

Featured Product

6 Publications



## Basic Information

### Catalog Number:

20772-1-AP

### Size:

150ul, Concentration: 260 µg/ml by Nanodrop and 207 µg/ml by Bradford method using BSA as the standard;

### Source:

Rabbit

### Isotype:

IgG

### Immunogen Catalog Number:

AG14764

### GenBank Accession Number:

BC005341

### GeneID (NCBI):

3987

### UNIPROT ID:

P48059

### Full Name:

LIM and senescent cell antigen-like domains 1

### Calculated MW:

325 aa, 37 kDa

### Observed MW:

35-37 kDa

### Purification Method:

Antigen affinity purification

### Recommended Dilutions:

WB 1:500-1:1000

IP 0.5-4.0 µg for 1.0-3.0 mg of total protein lysate

IHC 1:20-1:200

IF 1:10-1:100

## Applications

### Tested Applications:

WB, IP, IF, FC, IHC, ELISA

### Cited Applications:

WB, IP

### Species Specificity:

human, mouse, rat

### Cited Species:

human

**Note-IHC: suggested antigen retrieval with TE buffer pH 9.0; (\*) Alternatively, antigen retrieval may be performed with citrate buffer pH 6.0**

### Positive Controls:

**WB**: Caco-2 cells, mouse lung tissue, human kidney tissue, HeLa cells

**IP**: K-562 cells,

**IHC**: human oesophagus cancer tissue,

**IF**: HeLa cells,

## Notable Publications

Author	Pubmed ID	Journal	Application
Ling Guo	31578224	J Cell Biol	WB,IP
Ling Guo	33004813	Nat Commun	WB
Clotilde Huet-Calderwood	25086068	J Cell Sci	WB

## Storage

### Storage:

Store at -20°C. Stable for one year after shipment.

### Storage Buffer:

PBS with 0.02% sodium azide and 50% glycerol pH 7.3.

Aliquoting is unnecessary for -20°C storage

\*\*\* 20ul sizes contain 0.1% BSA

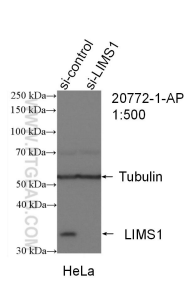
For technical support and original validation data for this product please contact:

T: 1 (888) 4PTGLAB (1-888-478-4522) (toll free in USA), or 1(312) 455-8498 (outside USA)

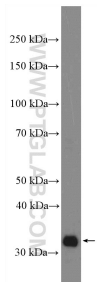
E: [proteintech@ptglab.com](mailto:proteintech@ptglab.com)  
W: [ptglab.com](http://ptglab.com)

This product is exclusively available under Proteintech Group brand and is not available to purchase from any other manufacturer.

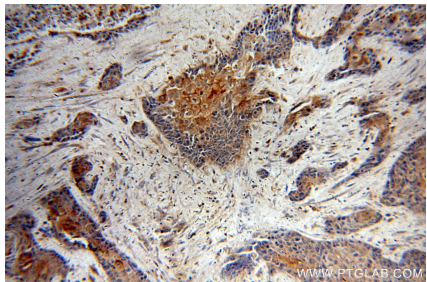
Selected Validation Data



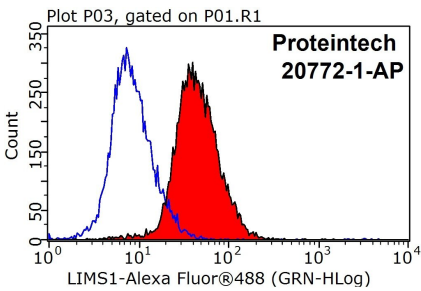
WB result of LIMS1 antibody (20772-1-AP; 1:500; incubated at room temperature for 1.5 hours) with sh-Control and sh-LIMS1 transfected HeLa cells.



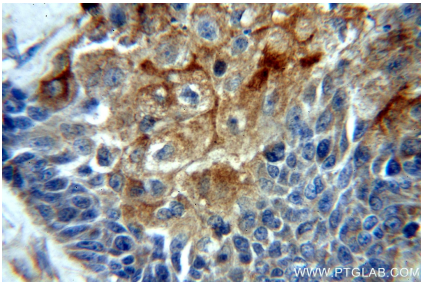
Caco-2 cells were subjected to SDS PAGE followed by western blot with 20772-1-AP (LIMS1 antibody) at dilution of 1:600 incubated at room temperature for 1.5 hours.



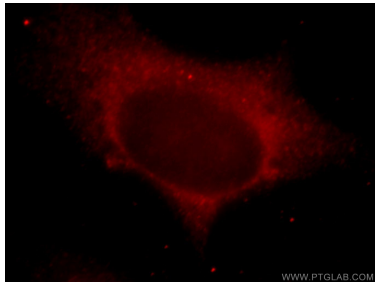
Immunohistochemical analysis of paraffin-embedded human oesophagus cancer using 20772-1-AP (LIMS1 antibody) at dilution of 1:50 (under 10x lens).



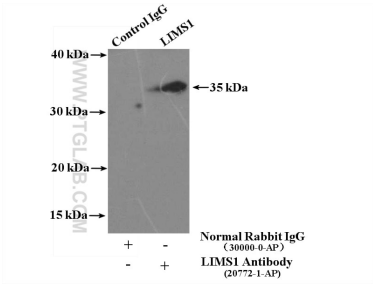
1X10<sup>6</sup> HeLa cells were stained with 0.2ug LIMS1 antibody (20772-1-AP, red) and control antibody (blue). Fixed with 90% MeOH blocked with 3% BSA (30 min). Alexa Fluor 488-conjugated AffiniPure Goat Anti-Rabbit IgG(H+L) with dilution 1:1000.



Immunohistochemical analysis of paraffin-embedded human oesophagus cancer using 20772-1-AP (LIMS1 antibody) at dilution of 1:50 (under 40x lens).



Immunofluorescent analysis of HeLa cells, using LIMS1 antibody 20772-1-AP at 1:25 dilution and Rhodamine-labeled goat anti-rabbit IgG (red).



IP result of anti-LIMS1 (IP:20772-1-AP, 4ug; Detection:20772-1-AP 1:500) with K-562 cells lysate 3600ug.