

For Research Use Only

NPT1 Polyclonal antibody

Catalog Number: 20751-1-AP **3 Publications**



Basic Information

Catalog Number: 20751-1-AP	GenBank Accession Number: BC101745	Purification Method: Antigen affinity purification
Size: 150ul, Concentration: 500 µg/ml by Nanodrop and 300 µg/ml by Bradford method using BSA as the standard;	GeneID (NCBI): 6568	Recommended Dilutions: WB 1:500-1:2400
Source: Rabbit	Full Name: solute carrier family 17 (sodium phosphate), member 1	
Isotype: IgG	Calculated MW: 467 aa, 51 kDa	
Immunogen Catalog Number: AG12819	Observed MW: 50 kDa, 60-64 kDa	

Applications

Tested Applications: WB, ELISA	Positive Controls: WB: human placenta tissue, mouse kidney tissue
Cited Applications: WB	
Species Specificity: human, mouse, rat	
Cited Species: human, mouse	

Background Information

NPT1 (also known as SLC17A1) is a member of sodium-dependent inorganic phosphate transporters (NPT), which regulates entrance into the cellular membrane. NPT1 is mainly expressed in the kidney transporting small organic anions such as PAH (para-aminohippurate), but it is also found in the liver and brain. NTP1 localizes to the apical membrane of renal proximal tubular cells. NPT1 exists two isoforms due to the alternative splicing. Western blot analysis using this antibody detected a major band around 45-55 kDa in kidney tissue.

Notable Publications

Author	Pubmed ID	Journal	Application
Ruixia Bao	34785103	Phytomedicine	WB
Jing Xiao	29497172	Exp Mol Med	WB
Ruixia Bao	31920654	Front Pharmacol	WB

Storage

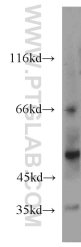
Storage:
Store at -20°C. Stable for one year after shipment.
Storage Buffer:
PBS with 0.02% sodium azide and 50% glycerol pH 7.3.
Aliquoting is unnecessary for -20°C storage

***** 20ul sizes contain 0.1% BSA**

For technical support and original validation data for this product please contact:
T: 1 (888) 4PTGLAB (1-888-478-4522) (toll free in USA), or 1(312) 455-8498 (outside USA)
E: proteintech@ptglab.com
W: ptglab.com

This product is exclusively available under Proteintech Group brand and is not available to purchase from any other manufacturer.

Selected Validation Data



human placenta tissue were subjected to SDS PAGE followed by western blot with 20751-1-AP (NPT1 antibody) at dilution of 1:300 incubated at room temperature for 1.5 hours.