

For Research Use Only

SH3BP1 Polyclonal antibody

Catalog Number: 20541-1-AP

Featured Product

2 Publications



Basic Information

Catalog Number: 20541-1-AP	GenBank Accession Number: BC008282	Purification Method: Antigen affinity purification
Size: 150ul , Concentration: 600 µg/ml by Nanodrop;	GeneID (NCBI): 23616	Recommended Dilutions: WB 1:2000-1:10000 IF 1:10-1:100
Source: Rabbit	Full Name: SH3-domain binding protein 1	
Isotype: IgG	Calculated MW: 701 aa, 76 kDa	
Immunogen Catalog Number: AG14575	Observed MW: 76-80 kDa, 51 kDa	

Applications

Tested Applications: IF, WB, ELISA	Positive Controls: WB : HeLa cells, mouse brain tissue, HepG2 cells, mouse lung tissue, mouse spleen tissue IF : HepG2 cells, Hela cells
Cited Applications: IF, WB	
Species Specificity: human, mouse	
Cited Species: human, mouse	

Background Information

Notable Publications

Author	Pubmed ID	Journal	Application
Daniel Schlam	26465210	Nat Commun	IF
Kibeom Park	35352878	Cancer Med	WB

Storage

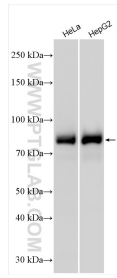
Storage:
Store at -20°C. Stable for one year after shipment.
Storage Buffer:
PBS with 0.02% sodium azide and 50% glycerol pH 7.3.
Aliquoting is unnecessary for -20°C storage

*** 20ul sizes contain 0.1% BSA

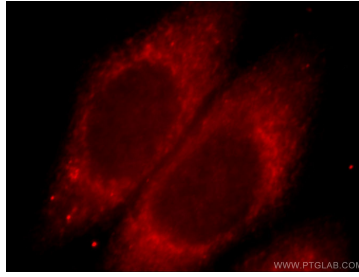
For technical support and original validation data for this product please contact:
T: 1 (888) 4PTGLAB (1-888-478-4522) (toll free in USA), or 1(312) 455-8498 (outside USA)
E: proteintech@ptglab.com
W: ptglab.com

This product is exclusively available under Proteintech Group brand and is not available to purchase from any other manufacturer.

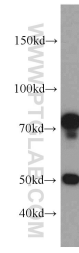
Selected Validation Data



Various lysates were subjected to SDS PAGE followed by western blot with 20541-1-AP (SH3BP1 antibody) at dilution of 1:5000 incubated at room temperature for 1.5 hours.



Immunofluorescent analysis of HepG2 cells, using SH3BP1 antibody 20541-1-AP at 1:25 dilution and Rhodamine-labeled goat anti-rabbit IgG (red).



mouse lung tissue were subjected to SDS PAGE followed by western blot with 20541-1-AP (SH3BP1 antibody) at dilution of 1:500 incubated at room temperature for 1.5 hours.