

For Research Use Only

EFS Polyclonal antibody

Catalog Number: 20538-1-AP **1 Publications**



Basic Information

Catalog Number: 20538-1-AP	GenBank Accession Number: BC034246	Purification Method: Antigen affinity purification
Size: 150ul , Concentration: 900 µg/ml by Nanodrop;	GeneID (NCBI): 10278	Recommended Dilutions: WB 1:300-1:1000 IP 0.5-4.0 ug for IP and 1:200-1:1000 for WB
Source: Rabbit	Full Name: embryonal Fyn-associated substrate	IHC 1:50-1:500 IF 1:10-1:100
Isotype: IgG	Calculated MW: 561 aa, 59 kDa	
Immunogen Catalog Number: AG14565	Observed MW: 80-90 kDa, 67-70 kDa	

Applications

Tested Applications: IF, IHC, IP, WB, ELISA	Positive Controls: WB : mouse thymus tissue, human placenta tissue IP : mouse thymus tissue, IHC : human spleen tissue, IF : HepG2 cells,
Cited Applications: WB	
Species Specificity: human, mouse, rat	
Cited Species: human	
Note-IHC: suggested antigen retrieval with TE buffer pH 9.0; (*) Alternatively, antigen retrieval may be performed with citrate buffer pH 6.0	

Background Information

Notable Publications

Author	Pubmed ID	Journal	Application
Tingting Hu	35360840	Front Genet	WB

Storage

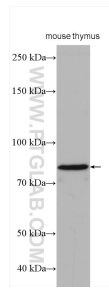
Storage:
Store at -20°C. Stable for one year after shipment.
Storage Buffer:
PBS with 0.02% sodium azide and 50% glycerol pH 7.3.
Aliquoting is unnecessary for -20°C storage

*** 20ul sizes contain 0.1% BSA

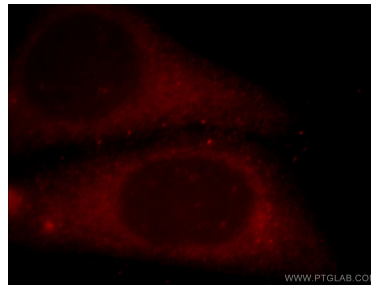
For technical support and original validation data for this product please contact:
T: 1 (888) 4PTGLAB (1-888-478-4522) (toll free in USA), or 1(312) 455-8498 (outside USA)
E: proteintech@ptglab.com
W: ptglab.com

This product is exclusively available under Proteintech Group brand and is not available to purchase from any other manufacturer.

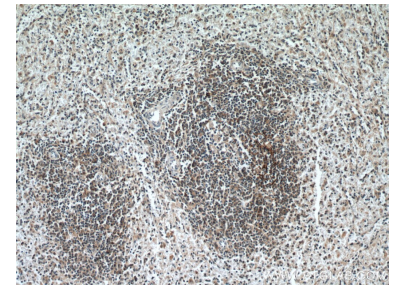
Selected Validation Data



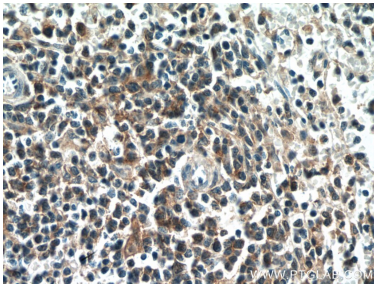
mouse thymus tissue were subjected to SDS PAGE followed by western blot with 20538-1-AP (EFS antibody) at dilution of 1:1000 incubated at room temperature for 1.5 hours.



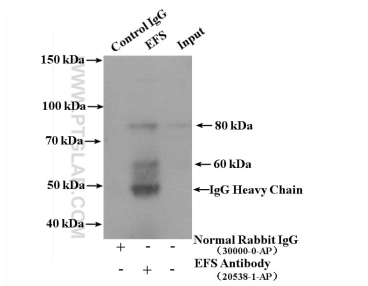
Immunofluorescent analysis of HepG2 cells, using EFS antibody 20538-1-AP at 1:25 dilution and Rhodamine-labeled goat anti-rabbit IgG (red).



Immunohistochemical analysis of paraffin-embedded human spleen tissue slide using 20538-1-AP (EFS antibody) at dilution of 1:200 (under 10x lens. Heat mediated antigen retrieval with Tris-EDTA buffer (pH 9.0).



Immunohistochemical analysis of paraffin-embedded human spleen tissue slide using 20538-1-AP (EFS antibody) at dilution of 1:200 (under 40x lens. Heat mediated antigen retrieval with Tris-EDTA buffer (pH 9.0).



IP Result of anti-EFS (IP:20538-1-AP, 4ug; Detection:20538-1-AP 1:300) with mouse thymus tissue lysate 3200ug.