

For Research Use Only

EPS8L2 Polyclonal antibody

Catalog Number: 20461-1-AP

Featured Product

2 Publications



Basic Information

Catalog Number:
20461-1-AP

Size:
150ul, Concentration: 450 µg/ml by Nanodrop and 287 µg/ml by Bradford method using BSA as the standard;

Source:
Rabbit

Isotype:
IgG

Immunogen Catalog Number:
AG14296

GenBank Accession Number:
BC002474

GeneID (NCBI):
64787

Full Name:
EPS8-like 2

Calculated MW:
715 aa, 81 kDa

Observed MW:
81-85 kDa

Purification Method:
Antigen affinity purification

Recommended Dilutions:
WB 1:1000-1:6000
IP 0.5-4.0 µg for 1.0-3.0 mg of total protein lysate
IHC 1:50-1:500
IF 1:10-1:100

Applications

Tested Applications:
IF, IHC, IP, WB, ELISA

Cited Applications:
IF, IHC, WB

Species Specificity:
human, mouse

Cited Species:
mouse

Note-IHC: suggested antigen retrieval with TE buffer pH 9.0; (*) Alternatively, antigen retrieval may be performed with citrate buffer pH 6.0

Positive Controls:

WB: A431 cells, HepG2 cells, HeLa cells, mouse skin tissue

IP: HeLa cells,

IHC: human lung cancer tissue,

IF: HeLa cells,

Background Information

EPS8L2 (epidermal growth factor receptor pathway substrate 8 L2), a member of the Eps8-like protein family, is a newly identified hair bundle protein that is localized at the tips of stereocilia of both cochlear and vestibular hair cells.

Notable Publications

Author	Pubmed ID	Journal	Application
Xiaosen Ouyang	32350405	Lab Invest	IHC
Min Yu	37925638	Cell Rep	IF, WB

Storage

Storage:

Store at -20°C. Stable for one year after shipment.

Storage Buffer:

PBS with 0.02% sodium azide and 50% glycerol pH 7.3.

Aliquoting is unnecessary for -20°C storage

*** 20ul sizes contain 0.1% BSA

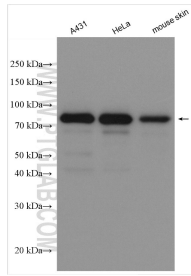
For technical support and original validation data for this product please contact:

T: 1 (888) 4PTGLAB (1-888-478-4522) (toll free in USA), or 1(312) 455-8498 (outside USA)

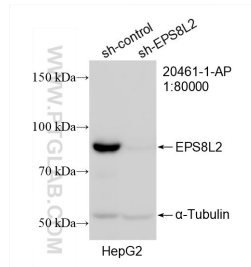
E: proteintech@ptglab.com
W: ptglab.com

This product is exclusively available under Proteintech Group brand and is not available to purchase from any other manufacturer.

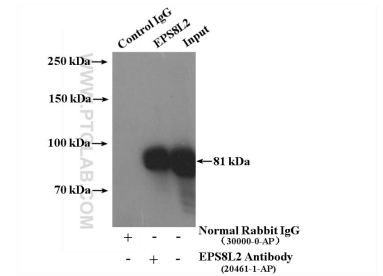
Selected Validation Data



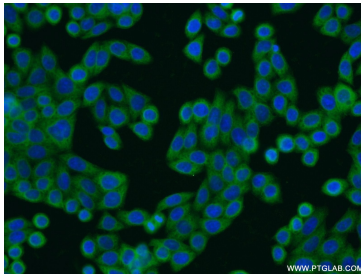
Various lysates were subjected to SDS PAGE followed by western blot with 20461-1-AP (EPS8L2 antibody) at dilution of 1:3000 incubated at room temperature for 1.5 hours.



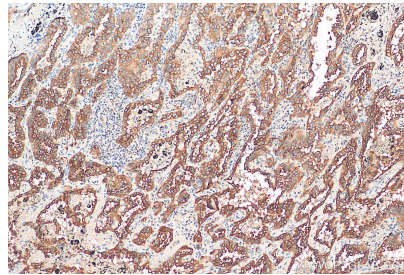
WB result of EPS8L2 antibody (20461-1-AP; 1:80000; incubated at room temperature for 1.5 hours) with sh-Control and sh-EPS8L2 transfected HepG2 cells.



IP Result of anti-EPS8L2 (IP:20461-1-AP, 4ug; Detection:20461-1-AP 1:1000) with HeLa cells lysate 3200ug.



Immunofluorescent analysis of HeLa cells using 20461-1-AP (EPS8L2 antibody) at dilution of 1:25 and Alexa Fluor 488-conjugated AffiniPure Goat Anti-Rabbit IgG(H+L).



Immunohistochemical analysis of paraffin-embedded human lung cancer tissue slide using 20461-1-AP (EPS8L2 antibody) at dilution of 1:200 (under 10x lens). Heat mediated antigen retrieval with Tris-EDTA buffer (pH 9.0).