

For Research Use Only

ANKZF1 Polyclonal antibody

Catalog Number: 20447-1-AP **2 Publications**



Basic Information

Catalog Number: 20447-1-AP	GenBank Accession Number: BC000238	Purification Method: Antigen affinity purification
Size: 150ul, Concentration: 1100 µg/ml by Nanodrop and 507 µg/ml by Bradford method using BSA as the standard;	GeneID (NCBI): 55139	Recommended Dilutions: WB 1:1000-1:4000 IHC 1:50-1:500
Source: Rabbit	Full Name: ankyrin repeat and zinc finger domain containing 1	
Isotype: IgG	Calculated MW: 726 aa, 81 kDa	
Immunogen Catalog Number: AG14285	Observed MW: 81 kDa	

Applications

Tested Applications: IHC, WB, ELISA	Positive Controls: WB : BxPC-3 cells, COLO 320 cells, HeLa cells, HepG2 cells, MCF-7 cells IHC : human liver tissue,
Cited Applications: IF, WB	
Species Specificity: human	
Cited Species: human	

Note-IHC: suggested antigen retrieval with TE buffer pH 9.0; (*) Alternatively, antigen retrieval may be performed with citrate buffer pH 6.0

Background Information

Notable Publications

Author	Pubmed ID	Journal	Application
Suman Rimal	34663454	Acta Neuropathol Commun	WB,IF
Yi-Ju Tseng	37333274	bioRxiv	WB

Storage

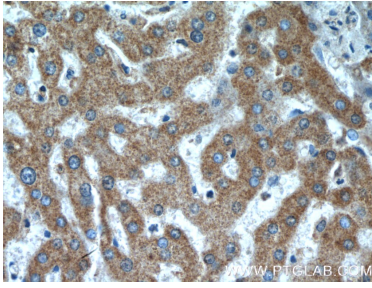
Storage:
Store at -20°C. Stable for one year after shipment.
Storage Buffer:
PBS with 0.02% sodium azide and 50% glycerol pH 7.3.
Aliquoting is unnecessary for -20°C storage

***** 20ul sizes contain 0.1% BSA**

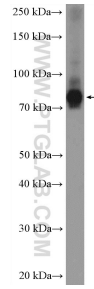
For technical support and original validation data for this product please contact:
T: 1 (888) 4PTGLAB (1-888-478-4522) (toll free in USA), or 1(312) 455-8498 (outside USA)
E: proteintech@ptglab.com
W: ptglab.com

This product is exclusively available under Proteintech Group brand and is not available to purchase from any other manufacturer.

Selected Validation Data



Immunohistochemical analysis of paraffin-embedded human liver tissue slide using 20447-1-AP (ANKZF1 antibody) at dilution of 1:200 (under 40x lens).



BxPC-3 cells were subjected to SDS PAGE followed by western blot with 20447-1-AP (ANKZF1 Antibody) at dilution of 1:2000 incubated at room temperature for 1.5 hours.