

For Research Use Only

SLC13A4 Polyclonal antibody

Catalog Number: 20302-1-AP **2 Publications**



Basic Information

Catalog Number: 20302-1-AP	GenBank Accession Number: BC030689	Purification Method: Antigen affinity purification
Size: 150ul , Concentration: 133 µg/ml by Nanodrop and 133 µg/ml by Bradford method using BSA as the standard;	GeneID (NCBI): 26266	Recommended Dilutions: WB 1:500-1:1000 IF 1:20-1:200
Source: Rabbit	Full Name: solute carrier family 13 (sodium/sulfate symporters), member 4	
Isotype: IgG	Calculated MW: 626 aa, 69 kDa	
Immunogen Catalog Number: AG14116	Observed MW: 69 kDa	

Applications

Tested Applications: IF, WB, ELISA	Positive Controls: WB : HEK-293 cells, IF : HEK-293 cells,
Cited Applications: IHC, WB	
Species Specificity: human, mouse, rat	
Cited Species: mouse	

Background Information

SLC13A4 (also known as SUT-1 or NaS2) belongs to the family of Na⁺-coupled anion transporters and mediates sulfate reabsorption in the high endothelial venules (HEV). Sulfate is an obligate nutrient for fetal development. Highly expressed in placenta, SLC13A4 has been proposed to play important physiological roles in maintaining high maternal serum sulfate levels during pregnancy and mediating sulfate supply to the fetus.

Notable Publications

Author	Pubmed ID	Journal	Application
Zhe Zhang	30956169	EBioMedicine	IHC
Dawson Paul A PA	22674389	Biol Reprod	WB, IHC

Storage

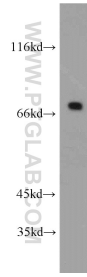
Storage:
Store at -20°C. Stable for one year after shipment.
Storage Buffer:
PBS with 0.02% sodium azide and 50% glycerol pH 7.3.
Aliquoting is unnecessary for -20°C storage

*** 20ul sizes contain 0.1% BSA

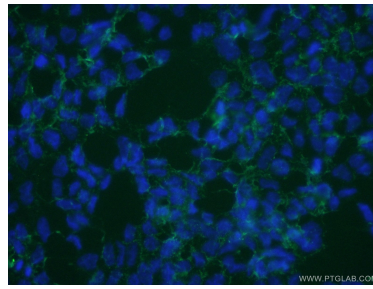
For technical support and original validation data for this product please contact:
T: 1 (888) 4PTGLAB (1-888-478-4522) (toll free in USA), or 1(312) 455-8498 (outside USA)
E: proteintech@ptglab.com
W: ptglab.com

This product is exclusively available under Proteintech Group brand and is not available to purchase from any other manufacturer.

Selected Validation Data



HEK-293 cells were subjected to SDS PAGE followed by western blot with 20302-1-AP (SLC13A4 antibody) at dilution of 1:500 incubated at room temperature for 1.5 hours.



Immunofluorescent analysis of (10% Formaldehyde) fixed HEK-293 cells using 20302-1-AP (SLC13A4 antibody) at dilution of 1:50 and Alexa Fluor 488-conjugated AffiniPure Goat Anti-Rabbit IgG(H+L).