

For Research Use Only

STEAP1 Polyclonal antibody

Catalog Number: 20199-1-AP **2 Publications**



Basic Information

| | | |
|--|---|--|
| Catalog Number: 20199-1-AP | GenBank Accession Number: BC011802 | Purification Method: Antigen affinity purification |
| Size: 150ul , Concentration: 200 µg/ml by Nanodrop and 200 µg/ml by Bradford method using BSA as the standard; | GeneID (NCBI): 26872 | Recommended Dilutions: WB 1:500-1:1000 IHC 1:50-1:500 |
| Source: Rabbit | Full Name: six transmembrane epithelial antigen of the prostate 1 | |
| Isotype: IgG | Calculated MW: 339 aa, 40 kDa | |
| Immunogen Catalog Number: AG14134 | Observed MW: 38-40 kDa | |

Applications

| | |
|--|---|
| Tested Applications: IHC, WB, ELISA | Positive Controls: WB : A431 cells, DU 145 cells IHC : human prostate cancer tissue, |
| Cited Applications: IHC, WB | |
| Species Specificity: human | |
| Cited Species: human | |
| Note-IHC: suggested antigen retrieval with TE buffer pH 9.0; (*) Alternatively, antigen retrieval may be performed with citrate buffer pH 6.0 | |

Background Information

Notable Publications

| Author | Pubmed ID | Journal | Application |
|------------|-----------|------------------|-------------|
| Dong Zhang | 36316642 | Cancer Biol Ther | WB |
| Yue Zhu | 35436987 | Cell Death Dis | IHC |

Storage

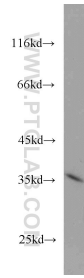
Storage:
Store at -20°C. Stable for one year after shipment.
Storage Buffer:
PBS with 0.02% sodium azide and 50% glycerol pH 7.3.
Aliquoting is unnecessary for -20°C storage

*** 20ul sizes contain 0.1% BSA

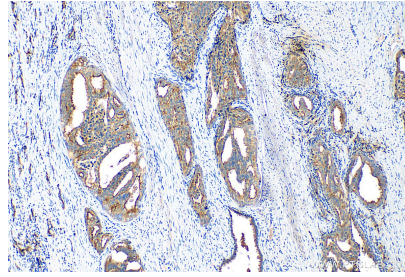
For technical support and original validation data for this product please contact:
T: 1 (888) 4PTGLAB (1-888-478-4522) (toll free in USA), or 1(312) 455-8498 (outside USA)
E: proteintech@ptglab.com
W: ptglab.com

This product is exclusively available under Proteintech Group brand and is not available to purchase from any other manufacturer.

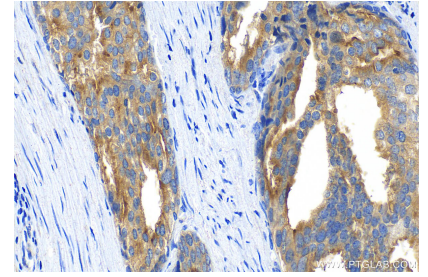
Selected Validation Data



A431 cells were subjected to SDS PAGE followed by western blot with 20199-1-AP (STEAP1 antibody) at dilution of 1:500 incubated at room temperature for 1.5 hours.



Immunohistochemical analysis of paraffin-embedded human prostate cancer tissue slide using 20199-1-AP (STEAP1 antibody) at dilution of 1:200 (under 10x lens). Heat mediated antigen retrieval with Tris-EDTA buffer (pH 9.0).



Immunohistochemical analysis of paraffin-embedded human prostate cancer tissue slide using 20199-1-AP (STEAP1 antibody) at dilution of 1:200 (under 40x lens). Heat mediated antigen retrieval with Tris-EDTA buffer (pH 9.0).