

For Research Use Only

PPDPF Polyclonal antibody

Catalog Number: 19912-1-AP **6 Publications**



Basic Information

Catalog Number: 19912-1-AP	GenBank Accession Number: BC002531	Purification Method: Antigen affinity purification
Size: 150ul, Concentration: 450 µg/ml by Nanodrop and 193 µg/ml by Bradford method using BSA as the standard;	GeneID (NCBI): 79144	Recommended Dilutions: WB 1:500-1:1000 IHC 1:20-1:200 IF 1:10-1:100
Source: Rabbit	Full Name: chromosome 20 open reading frame 149	
Isotype: IgG	Calculated MW: 114 aa, 12 kDa	
Immunogen Catalog Number: AG13740	Observed MW: 10-12 kDa	

Applications

Tested Applications:

IF, IHC, WB, ELISA

Cited Applications:

IF, IHC, WB

Species Specificity:

human, mouse

Cited Species:

human, mouse

Note-IHC: suggested antigen retrieval with TE buffer pH 9.0; (*) Alternatively, antigen retrieval may be performed with citrate buffer pH 6.0

Positive Controls:

WB : MCF-7 cells, mouse pancreas tissue

IHC : human colon tissue, human pancreas tissue

IF : HeLa cells,

Background Information

Pancreatic progenitor cell differentiation and proliferation factor (PPDPF), also known as C20orf149 and EXPDF, belongs to the PPDPF family. PPDPF is a key regulator for the development of exocrine pancreas. PPDPF is highly expressed in various cancers, including HCC, colorectal cancer, prostate cancer, etc (PMID: 34031390, 34975328, 37027301). PPDPF consists of 114 amino acids and the molecular weight is 12 kDa.

Notable Publications

Author	Pubmed ID	Journal	Application
Marcel Morgenstern	34800366	Cell Metab	
Yangjiong Xiao	34041032	Front Oncol	WB
Mu Yun	34975328	Int J Biol Sci	WB

Storage

Storage:

Store at -20°C. Stable for one year after shipment.

Storage Buffer:

PBS with 0.02% sodium azide and 50% glycerol pH 7.3.

Aliquoting is unnecessary for -20°C storage

***** 20ul sizes contain 0.1% BSA**

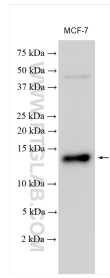
For technical support and original validation data for this product please contact:

T: 1 (888) 4PTGLAB (1-888-478-4522) (toll free in USA), or 1(312) 455-8498 (outside USA)

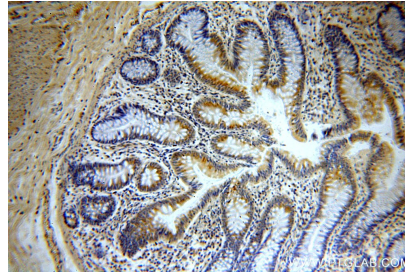
E: proteintech@ptglab.com
W: ptglab.com

This product is exclusively available under Proteintech Group brand and is not available to purchase from any other manufacturer.

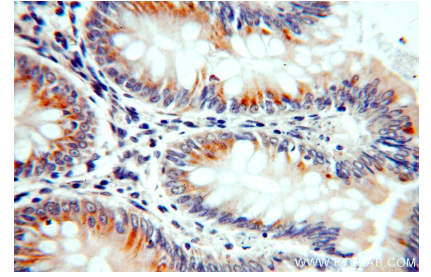
Selected Validation Data



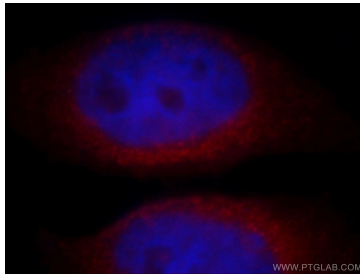
Various lysates were subjected to SDS PAGE followed by western blot with 19912-1-AP (PPDPF antibody) at dilution of 1:500 incubated at room temperature for 1.5 hours.



Immunohistochemical analysis of paraffin-embedded human colon using 19912-1-AP (PPDPF antibody) at dilution of 1:100 (under 10x lens).



Immunohistochemical analysis of paraffin-embedded human colon using 19912-1-AP (PPDPF antibody) at dilution of 1:100 (under 40x lens).



Immunofluorescent analysis of HeLa cells, using PPDPF antibody 19912-1-AP at 1:25 dilution and Rhodamine-labeled goat anti-rabbit IgG (red). Blue pseudocolor = DAPI (fluorescent DNA dye).