

For Research Use Only

# SLC10A3 Polyclonal antibody

Catalog Number: 19909-1-AP



## Basic Information

<b>Catalog Number:</b> 19909-1-AP	<b>GenBank Accession Number:</b> BC004966	<b>Purification Method:</b> Antigen affinity purification
<b>Size:</b> 150ul, Concentration: 200 µg/ml by Nanodrop and 133 µg/ml by Bradford method using BSA as the standard;	<b>GeneID (NCBI):</b> 8273	<b>Recommended Dilutions:</b> WB 1:500-1:1000 IHC 1:20-1:200 IF 1:10-1:100
<b>Source:</b> Rabbit	<b>UNIPROT ID:</b> P09131	
<b>Isotype:</b> IgG	<b>Full Name:</b> solute carrier family 10 (sodium/bile acid cotransporter family), member 3	
<b>Immunogen Catalog Number:</b> AG13915	<b>Calculated MW:</b> 477 aa, 50 kDa	
	<b>Observed MW:</b> 50 kDa, 48 kDa	

## Applications

### Tested Applications:

IF, IHC, WB, ELISA

### Species Specificity:

human, mouse

**Note-IHC: suggested antigen retrieval with TE buffer pH 9.0; (\*) Alternatively, antigen retrieval may be performed with citrate buffer pH 6.0**

### Positive Controls:

WB : 37°C incubated A549 cells,

IHC : human pancreas tissue,

IF : HeLa cells,

## Background Information

The solute carrier (SLC) family 10 (SLC10) encodes protein for transporters of various agents, bile acids and steroidal hormones, and SLC10A3 belongs to the SLC10 family. SLC10A3 consists of 477 amino acids, with a calculated mass of approximately 50 kDa.

## Storage

### Storage:

Store at -20°C. Stable for one year after shipment.

### Storage Buffer:

PBS with 0.02% sodium azide and 50% glycerol pH 7.3.

Aliquoting is unnecessary for -20°C storage

\*\*\* 20ul sizes contain 0.1% BSA

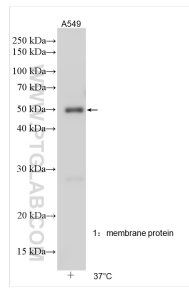
For technical support and original validation data for this product please contact:

T: 1 (888) 4PTGLAB (1-888-478-4522) (toll free in USA), or 1(312) 455-8498 (outside USA)

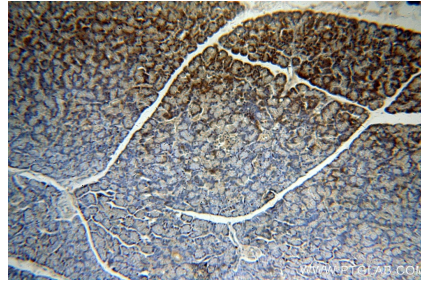
E: proteintech@ptglab.com  
W: ptglab.com

This product is exclusively available under Proteintech Group brand and is not available to purchase from any other manufacturer.

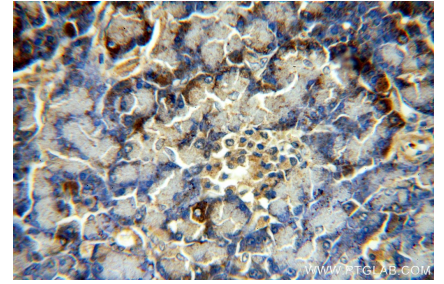
## Selected Validation Data



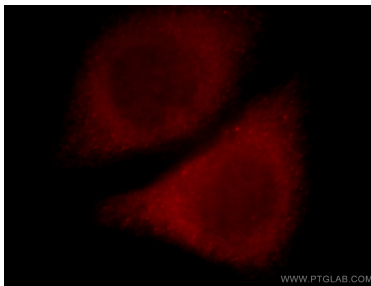
Various lysates were subjected to SDS PAGE followed by western blot with 19909-1-AP (SLC10A3 antibody) at dilution of 1:800 incubated at room temperature for 1.5 hours.



Immunohistochemical analysis of paraffin-embedded human pancreas using 19909-1-AP (SLC10A3 antibody) at dilution of 1:50 (under 10x lens).



Immunohistochemical analysis of paraffin-embedded human pancreas using 19909-1-AP (SLC10A3 antibody) at dilution of 1:50 (under 40x lens).



Immunofluorescent analysis of HeLa cells, using SLC10A3 antibody 19909-1-AP at 1:25 dilution and Rhodamine-labeled goat anti-rabbit IgG (red).