

For Research Use Only

hIST1 Polyclonal antibody

Catalog Number: 19842-1-AP **6 Publications**



Basic Information

Catalog Number: 19842-1-AP	GenBank Accession Number: BC000116	Purification Method: Antigen affinity purification
Size: 150ul , Concentration: 600 µg/ml by Nanodrop;	GeneID (NCBI): 9798	Recommended Dilutions: WB 1:5000-1:50000 IHC 1:20-1:200 IF 1:10-1:100
Source: Rabbit	Full Name: KIAA0174	
Isotype: IgG	Calculated MW: 364 aa, 40 kDa	
Immunogen Catalog Number: AG13874	Observed MW: 40 kDa	

Applications

Tested Applications: IF, IHC, WB, ELISA	Positive Controls:
Cited Applications: IF, WB	WB : HeLa cells, mouse liver tissue, mouse brain tissue, PC-3 cells
Species Specificity: human, mouse, rat	IHC : human kidney tissue, human hepatocirrhosis tissue
Cited Species: human, mouse	IF : HepG2 cells,
Note-IHC: suggested antigen retrieval with TE buffer pH 9.0; (*) Alternatively, antigen retrieval may be performed with citrate buffer pH 6.0	

Background Information

Notable Publications

Author	Pubmed ID	Journal	Application
Jay Xiaojun Tan	36071159	Nature	WB,IF
Ekansh Mittal	30482832	MBio	
Oliver B Davis	33308480	Dev Cell	WB

Storage

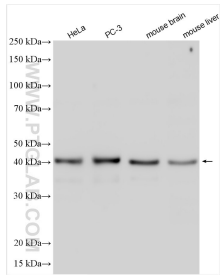
Storage:
Store at -20°C. Stable for one year after shipment.
Storage Buffer:
PBS with 0.02% sodium azide and 50% glycerol pH 7.3.
Aliquoting is unnecessary for -20°C storage

*** 20ul sizes contain 0.1% BSA

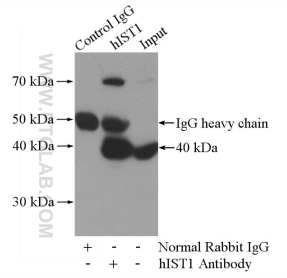
For technical support and original validation data for this product please contact:
T: 1 (888) 4PTGLAB (1-888-478-4522) (toll free in USA), or 1(312) 455-8498 (outside USA)
E: proteintech@ptglab.com
W: ptglab.com

This product is exclusively available under Proteintech Group brand and is not available to purchase from any other manufacturer.

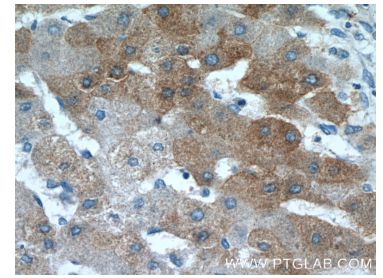
Selected Validation Data



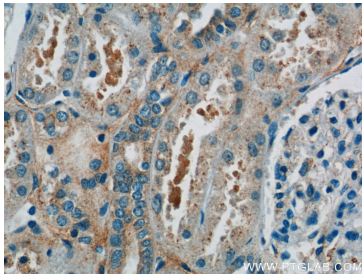
Various lysates were subjected to SDS PAGE followed by western blot with 19842-1-AP (hIST1 antibody) at dilution of 1:15000 incubated at room temperature for 1.5 hours.



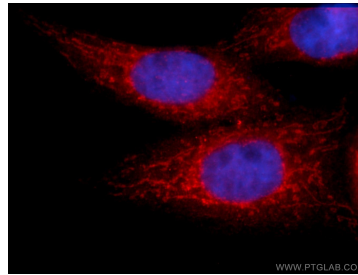
IP Result of anti-hIST1 (IP:19842-1-AP, 4 μ g; Detection:19842-1-AP 1:1000) with mouse liver tissue lysate 4000 μ g.



Immunohistochemical analysis of paraffin-embedded human hepatocirrhosis tissue slide using 19842-1-AP (hIST1 Antibody) at dilution of 1:50 (under 40x lens).



Immunohistochemical analysis of paraffin-embedded human kidney tissue slide using 19842-1-AP (hIST1 Antibody) at dilution of 1:50 (under 40x lens).



Immunofluorescent analysis of HepG2 cells using 19842-1-AP (hIST1 antibody) at dilution of 1:25 and Alexa Fluor 594-conjugated AffiniPure Goat Anti-Rabbit IgG(H+L).