

For Research Use Only

# STAG2 Polyclonal antibody

Catalog Number: 19837-1-AP **1 Publications**



## Basic Information

<b>Catalog Number:</b> 19837-1-AP	<b>GenBank Accession Number:</b> BC001765	<b>Purification Method:</b> Antigen affinity purification
<b>Size:</b> 150ul, Concentration: 700 µg/ml by Nanodrop and 500 µg/ml by Bradford method using BSA as the standard;	<b>GeneID (NCBI):</b> 10735	<b>Recommended Dilutions:</b> WB 1:1000-1:4000 IP 0.5-4.0 ug for IP and 1:1000-1:6000 for WB
<b>Source:</b> Rabbit	<b>Full Name:</b> stromal antigen 2	<b>IHC 1:20-1:200</b> <b>IF 1:10-1:100</b>
<b>Isotype:</b> IgG	<b>Calculated MW:</b> 1231 aa, 141 kDa	
<b>Immunogen Catalog Number:</b> AG13825	<b>Observed MW:</b> 130-141 kDa	

## Applications

<b>Tested Applications:</b> IF, IHC, IP, WB, ELISA	<b>Positive Controls:</b>
<b>Cited Applications:</b> WB	<b>WB:</b> Jurkat cells, HeLa cells, K-562 cells, MCF-7 cells, NIH/3T3 cells
<b>Species Specificity:</b> human, mouse, rat	<b>IP:</b> U-251 cells, MCF-7 cells
<b>Cited Species:</b> human	<b>IHC:</b> human cervical cancer tissue, <b>IF:</b> HEK-293 cells,
<b>Note-IHC: suggested antigen retrieval with TE buffer pH 9.0; (*) Alternatively, antigen retrieval may be performed with citrate buffer pH 6.0</b>	

## Background Information

STAG2, also named as SA2, is a component of cohesin complex, a complex required for the cohesion of sister chromatids after DNA replication. The cohesin complex may play a role in spindle pole assembly during mitosis. Mutations in STAG2 appear to be a first step in the transformation of a normal cell into a cancer cell.

## Notable Publications

Author	Pubmed ID	Journal	Application
Luwei He	34268906	Cancer Commun (Lond)	WB

## Storage

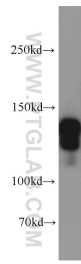
**Storage:**  
Store at -20°C. Stable for one year after shipment.  
**Storage Buffer:**  
PBS with 0.02% sodium azide and 50% glycerol pH 7.3.  
Aliquoting is unnecessary for -20°C storage

\*\*\* 20ul sizes contain 0.1% BSA

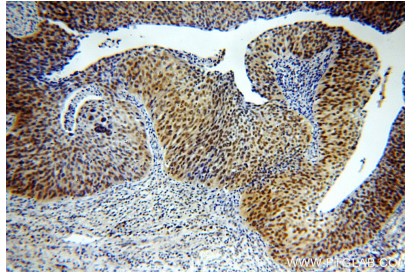
For technical support and original validation data for this product please contact:  
T: 1 (888) 4PTGLAB (1-888-478-4522) (toll free in USA), or 1(312) 455-8498 (outside USA)  
E: proteintech@ptglab.com  
W: ptglab.com

This product is exclusively available under Proteintech Group brand and is not available to purchase from any other manufacturer.

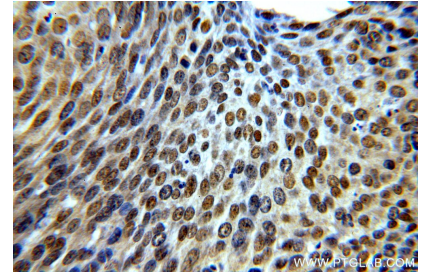
## Selected Validation Data



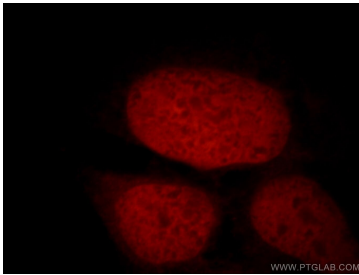
Jurkat cells were subjected to SDS PAGE followed by western blot with 19837-1-AP (STAG2 antibody) at dilution of 1:1000 incubated at room temperature for 1.5 hours.



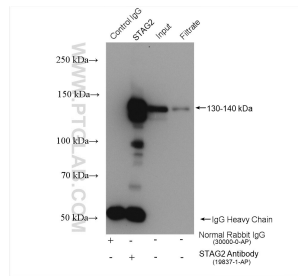
Immunohistochemical analysis of paraffin-embedded human cervical cancer using 19837-1-AP (STAG2 antibody) at dilution of 1:100 (under 10x lens).



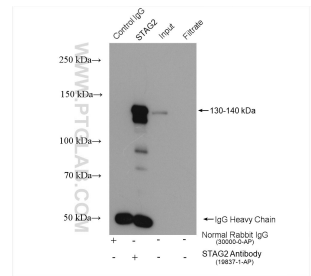
Immunohistochemical analysis of paraffin-embedded human cervical cancer using 19837-1-AP (STAG2 antibody) at dilution of 1:100 (under 40x lens).



Immunofluorescent analysis of 293 cells, using STAG2 antibody 19837-1-AP at 1:25 dilution and Rhodamine-labeled goat anti-rabbit IgG (red).



IP result of anti-STAG2(IP:19837-1-AP, 4ug; Detection:19837-1-AP 1:3000) with MCF-7 cells lysate 2120 ug.



IP result of anti-STAG2(IP:19837-1-AP, 4ug; Detection:19837-1-AP 1:3000) with U-251 cells lysate 3320 ug.