

For Research Use Only

NAB2 Polyclonal antibody

Catalog Number: 19601-1-AP **2 Publications**



Basic Information

Catalog Number: 19601-1-AP	GenBank Accession Number: BC065931	Purification Method: Antigen affinity purification
Size: 150ul, Concentration: 400 µg/ml by Nanodrop and 267 µg/ml by Bradford method using BSA as the standard;	GeneID (NCBI): 4665	Recommended Dilutions: WB 1:500-1:2000 IP 0.5-4.0 ug for IP and 1:500-1:1000 for WB
Source: Rabbit	Full Name: NGFI-A binding protein 2 (EGR1 binding protein 2)	IHC 1:20-1:200 IF 1:50-1:500
Isotype: IgG	Calculated MW: 57 kDa	
Immunogen Catalog Number: AG6346	Observed MW: 57 kDa	

Applications

Tested Applications: IF, IHC, IP, WB, ELISA	Positive Controls:
Cited Applications: IF, WB	WB: human heart tissue, human brain tissue, K-562 cells, mouse thymus tissue
Species Specificity: human, mouse, rat	IP: K-562 cells,
Cited Species: mouse	IHC: human brain tissue, human kidney tissue
Note-IHC: suggested antigen retrieval with TE buffer pH 9.0; (*) Alternatively, antigen retrieval may be performed with citrate buffer pH 6.0	IF: MCF-7 cells,

Background Information

Notable Publications

Author	Pubmed ID	Journal	Application
Yichen Wang	28763805	Invest Ophthalmol Vis Sci	IF
Yanli Zhang	36646797	Lab Anim (NY)	WB

Storage

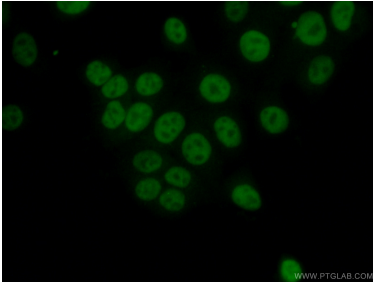
Storage:
Store at -20°C. Stable for one year after shipment.
Storage Buffer:
PBS with 0.02% sodium azide and 50% glycerol pH 7.3.
Aliquoting is unnecessary for -20°C storage

***** 20ul sizes contain 0.1% BSA**

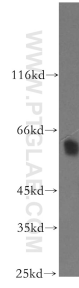
For technical support and original validation data for this product please contact:
T: 1 (888) 4PTGLAB (1-888-478-4522) (toll free in USA), or 1(312) 455-8498 (outside USA)
E: proteintech@ptglab.com
W: ptglab.com

This product is exclusively available under Proteintech Group brand and is not available to purchase from any other manufacturer.

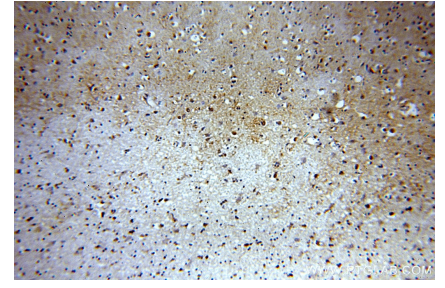
Selected Validation Data



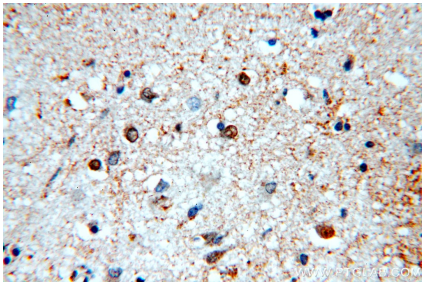
Immunofluorescent analysis of (4% PFA) fixed MCF-7 cells using 19601-1-AP (NAB2 antibody) at dilution of 1:50 and Alexa Fluor 488-conjugated AffiniPure Goat Anti-Rabbit IgG(H+L).



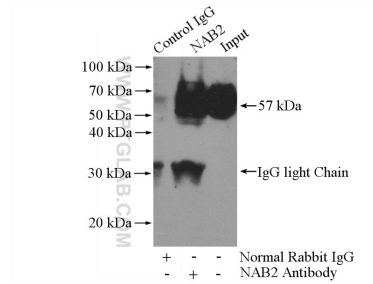
human heart tissue were subjected to SDS PAGE followed by western blot with 19601-1-AP (NAB2 antibody) at dilution of 1:500 incubated at room temperature for 1.5 hours.



Immunohistochemical analysis of paraffin-embedded human brain using 19601-1-AP (NAB2 antibody) at dilution of 1:100 (under 10x lens).



Immunohistochemical analysis of paraffin-embedded human brain using 19601-1-AP (NAB2 antibody) at dilution of 1:100 (under 40x lens).



IP Result of anti-NAB2 (IP:19601-1-AP, 4ug; Detection:19601-1-AP 1:700) with K-562 cells lysate 3200ug.