

For Research Use Only

# KIF19 Polyclonal antibody

Catalog Number: 19551-1-AP **2 Publications**



## Basic Information

<b>Catalog Number:</b> 19551-1-AP	<b>GenBank Accession Number:</b> NM_153209	<b>Purification Method:</b> Antigen affinity purification
<b>Size:</b> 150ul , Concentration: 1000 µg/ml by Nanodrop and 573 µg/ml by Bradford method using BSA as the standard;	<b>GeneID (NCBI):</b> 124602	<b>Recommended Dilutions:</b> WB 1:500-1:1000 IHC 1:20-1:200 IF 1:10-1:100
<b>Source:</b> Rabbit	<b>Full Name:</b> kinesin family member 19	
<b>Isotype:</b> IgG	<b>Calculated MW:</b> 111 kDa	
	<b>Observed MW:</b> 92 kDa	

## Applications

**Tested Applications:**  
IF, IHC, WB, ELISA

**Cited Applications:**  
IF, IP, WB

**Species Specificity:**  
human, mouse

**Cited Species:**  
human, mouse

**Note-IHC: suggested antigen retrieval with TE buffer pH 9.0; (\*) Alternatively, antigen retrieval may be performed with citrate buffer pH 6.0**

**Positive Controls:**

**WB :** human brain tissue,

**IHC :** human brain tissue,

**IF :** HepG2 cells,

## Background Information

KIF19 belongs to the kinesin-like protein family. The antibody recognizes isoform 1 of KIF19 only.

## Notable Publications

Author	Pubmed ID	Journal	Application
Kavisha Arora	32683324	J Biol Chem	WB, IF, IP
Zhang Yong Y	21149239	J Mol Cell Biol	WB

## Storage

**Storage:**

Store at -20°C. Stable for one year after shipment.

**Storage Buffer:**

PBS with 0.02% sodium azide and 50% glycerol pH 7.3.

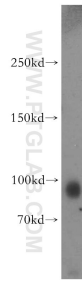
Aliquoting is unnecessary for -20°C storage

**\*\*\* 20ul sizes contain 0.1% BSA**

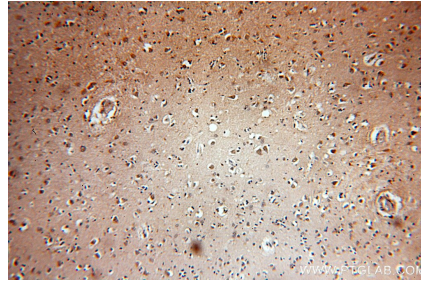
For technical support and original validation data for this product please contact:  
T: 1 (888) 4PTGLAB (1-888-478-4522) (toll free in USA), or 1(312) 455-8498 (outside USA)  
E: proteintech@ptglab.com  
W: ptglab.com

**This product is exclusively available under Proteintech Group brand and is not available to purchase from any other manufacturer.**

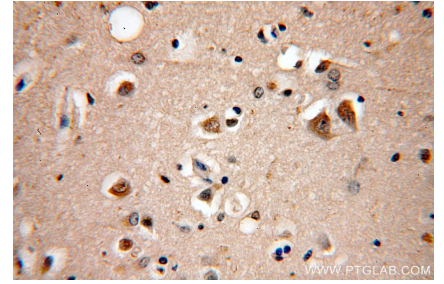
## Selected Validation Data



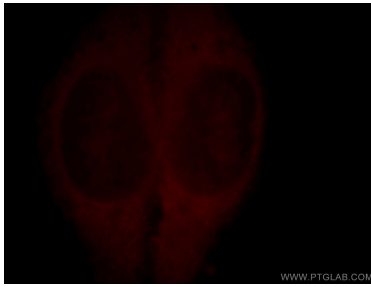
human brain tissue were subjected to SDS PAGE followed by western blot with 19551-1-AP (KIF19 antibody) at dilution of 1:300 incubated at room temperature for 1.5 hours.



Immunohistochemical analysis of paraffin-embedded human brain using 19551-1-AP (KIF19 antibody) at dilution of 1:50 (under 10x lens).



Immunohistochemical analysis of paraffin-embedded human brain using 19551-1-AP (KIF19 antibody) at dilution of 1:50 (under 40x lens).



Immunofluorescent analysis of HepG2 cells, using KIF19 antibody 19551-1-AP at 1:25 dilution and Rhodamine-labeled goat anti-rabbit IgG (red).