

For Research Use Only

PIH1D1 Polyclonal antibody

Catalog Number: 19427-1-AP **8 Publications**



Basic Information

Catalog Number: 19427-1-AP	GenBank Accession Number: BC001108	Purification Method: Antigen affinity purification
Size: 150ul, Concentration: 850 µg/ml by Nanodrop and 353 µg/ml by Bradford method using BSA as the standard;	GeneID (NCBI): 55011	Recommended Dilutions: WB 1:500-1:1000 IP 0.5-4.0 ug for IP and 1:500-1:2000 for WB
Source: Rabbit	Full Name: PIH1 domain containing 1	IHC 1:20-1:200 IF 1:10-1:100
Isotype: IgG	Calculated MW: 290 aa, 32 kDa	
Immunogen Catalog Number: AG13759	Observed MW: 39 kDa	

Applications

Tested Applications: IF, IHC, IP, WB, ELISA	Positive Controls:
Cited Applications: ColP, IHC, WB	WB: HeLa cells, human testis tissue, mouse ovary tissue, A431 cells, mouse eye tissue, human uterus tissue
Species Specificity: human, mouse, rat	IP: HeLa cells,
Cited Species: human, rat, mouse	IHC: human lung tissue, human ovary tissue
Note-IHC: <i>suggested antigen retrieval with TE buffer pH 9.0; (*) Alternatively, antigen retrieval may be performed with citrate buffer pH 6.0</i>	IF: HeLa cells,

Background Information

PIH1D1 (PIH1 domain-containing protein 1; also known as PIH1 or NOP17), is a ortholog of the yeast nucleolar protein NOP17. PIH1D1 is a conserved subunit of the R2TP complex participating in the assembly of snoRNP and RNA polymerase II complexes. PIH1D1 may also function as a novel modulator of apoptosis pathway.

Notable Publications

Author	Pubmed ID	Journal	Application
Yukiko Imai	28527011	Chromosoma	WB
Yoann Abel	35150569	Nucleic Acids Res	WB, ColP
Paul Yenerall	31883965	Cell Chem Biol	WB

Storage

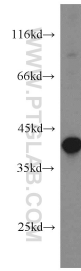
Storage:
Store at -20°C. Stable for one year after shipment.
Storage Buffer:
PBS with 0.02% sodium azide and 50% glycerol pH 7.3.
Aliquoting is unnecessary for -20°C storage

*** 20ul sizes contain 0.1% BSA

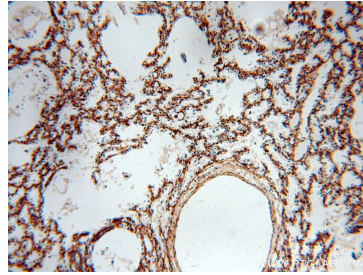
For technical support and original validation data for this product please contact:
T: 1 (888) 4PTGLAB (1-888-478-4522) (toll free in USA), or 1(312) 455-8498 (outside USA)
E: proteintech@ptglab.com
W: ptglab.com

This product is exclusively available under Proteintech Group brand and is not available to purchase from any other manufacturer.

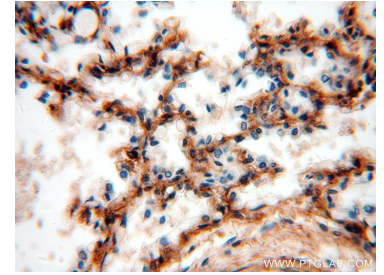
Selected Validation Data



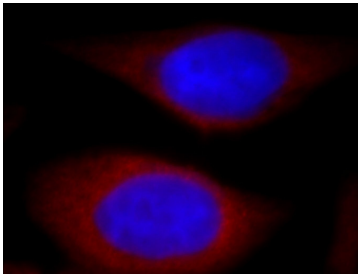
HeLa cells were subjected to SDS PAGE followed by western blot with 19427-1-AP (PIH1D1 antibody) at dilution of 1:800 incubated at room temperature for 1.5 hours.



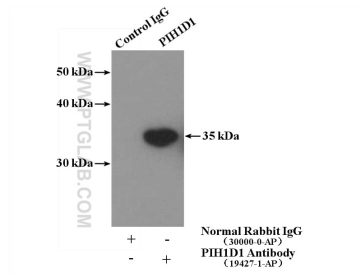
Immunohistochemical analysis of paraffin-embedded human lung using 19427-1-AP (PIH1D1 antibody) at dilution of 1:100 (under 10x lens).



Immunohistochemical analysis of paraffin-embedded human lung using 19427-1-AP (PIH1D1 antibody) at dilution of 1:100 (under 40x lens).



Immunofluorescent analysis of HeLa cells, using PIH1D1 antibody 19427-1-AP at 1:25 dilution and Rhodamine-labeled goat anti-rabbit IgG (red). Blue pseudocolor = DAPI (fluorescent DNA dye).



IP Result of anti-PIH1D1 (IP:19427-1-AP, 4ug; Detection:19427-1-AP 1:1000) with HeLa cells lysate 1200ug.