

For Research Use Only

RBM19 Polyclonal antibody

Catalog Number: 19095-1-AP



Basic Information

Catalog Number: 19095-1-AP	GenBank Accession Number: BC006137	Purification Method: Antigen affinity purification
Size: 150ul , Concentration: 400 µg/ml by Nanodrop and 353 µg/ml by Bradford method using BSA as the standard;	GeneID (NCBI): 9904	Recommended Dilutions: WB 1:500-1:2000 IHC 1:20-1:200 IF 1:10-1:100
Source: Rabbit	Full Name: RNA binding motif protein 19	
Isotype: IgG	Calculated MW: 107 kDa	
Immunogen Catalog Number: AG13545	Observed MW: 120 kDa	

Applications

Tested Applications: IF, IHC, WB, ELISA	Positive Controls:
Species Specificity: human, mouse	WB : mouse colon tissue, COLO 320 cells, mouse small intestine tissue
Note-IHC: suggested antigen retrieval with TE buffer pH 9.0; (*) Alternatively, antigen retrieval may be performed with citrate buffer pH 6.0	IHC : human colon tissue,
	IF : MCF-7 cells,

Background Information

RBM19, also named as KIAA0682, is a 960 amino acid protein, which belongs to the RRM MRD1 family. RBM19 is expressed in the crypts of Lieberkuhn of the intestine and in intestinal neoplasia. RBM19 plays a role in embryo pre-implantation development. The calculated molecular weight of RBM19 is 107 kDa, but the modified RBM19 is about 120 kDa.

Storage

Storage:
Store at -20°C. Stable for one year after shipment.
Storage Buffer:
PBS with 0.02% sodium azide and 50% glycerol pH 7.3.
Aliquoting is unnecessary for -20°C storage

*** 20ul sizes contain 0.1% BSA

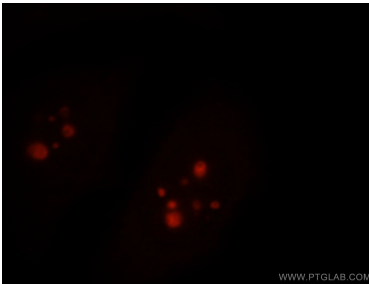
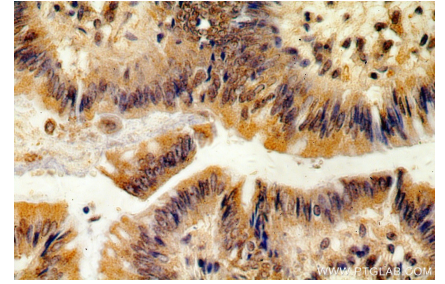
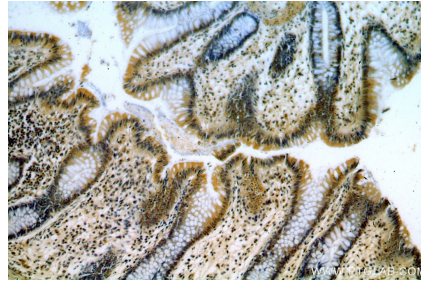
For technical support and original validation data for this product please contact:
T: 1 (888) 4PTGLAB (1-888-478-4522) (toll free in USA), or 1(312) 455-8498 (outside USA) E: proteintech@ptglab.com W: ptglab.com

This product is exclusively available under Proteintech Group brand and is not available to purchase from any other manufacturer.

Selected Validation Data



mouse colon tissue were subjected to SDS PAGE followed by western blot with 19095-1-AP (RBM19 antibody) at dilution of 1:300 incubated at room temperature for 1.5 hours.



Immunofluorescent analysis of MCF-7 cells, using RBM19 antibody 19095-1-AP at 1:25 dilution and Rhodamine-labeled goat anti-rabbit IgG (red).