

For Research Use Only

NECAB3 Polyclonal antibody

Catalog Number: 18940-1-AP

1 Publications



Basic Information

Catalog Number:

18940-1-AP

Size:

150ul, Concentration: 350 µg/ml by Nanodrop and 247 µg/ml by Bradford method using BSA as the standard;

Source:

Rabbit

Isotype:

IgG

Immunogen Catalog Number:

AG13493

GenBank Accession Number:

BC047673

GeneID (NCBI):

63941

UNIPROT ID:

Q96P71

Full Name:

N-terminal EF-hand calcium binding protein 3

Calculated MW:

362aa, 41 kDa; 396aa, 44 kDa

Observed MW:

40-44 kDa

Purification Method:

Antigen affinity purification

Recommended Dilutions:

WB 1:500-1:1000

IHC 1:20-1:200

Applications

Tested Applications:

WB, IHC, ELISA

Cited Applications:

IHC

Species Specificity:

human, mouse, rat

Cited Species:

mouse

Positive Controls:

WB : human brain tissue, rat brain tissue

IHC : human pancreas tissue,

Note-IHC: suggested antigen retrieval with TE buffer pH 9.0; (*) Alternatively, antigen retrieval may be performed with citrate buffer pH 6.0

Background Information

NECAB3, also named as APBA2BP, NIP1, SYTIP2 and XB51, is a potential substrate of Nek2. NECAB3 inhibits the interaction of APBA2 with beta-amyloid precursor protein (APP). NECAB3 has three isoforms with MW 40 kDa, 44 kDa and 22 kDa.

Notable Publications

Author	Pubmed ID	Journal	Application
Naughton Bartholomew J BJ	24278249	PLoS One	IHC

Storage

Storage:

Store at -20°C. Stable for one year after shipment.

Storage Buffer:

PBS with 0.02% sodium azide and 50% glycerol pH 7.3.

Aliquoting is unnecessary for -20°C storage

*** 20ul sizes contain 0.1% BSA

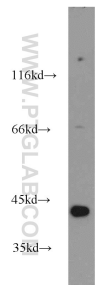
For technical support and original validation data for this product please contact:

T: 1 (888) 4PTGLAB (1-888-478-4522) (toll free in USA), or 1(312) 455-8498 (outside USA)

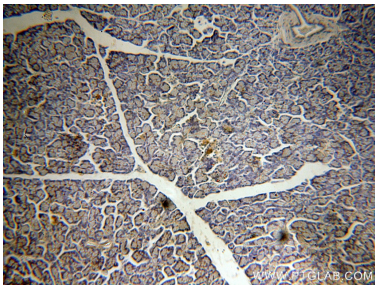
E: proteintech@ptglab.com
W: ptglab.com

This product is exclusively available under Proteintech Group brand and is not available to purchase from any other manufacturer.

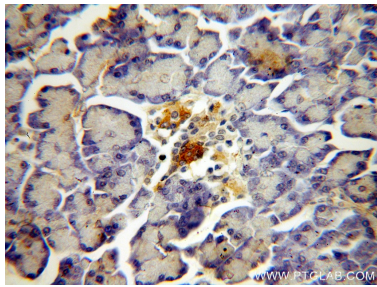
Selected Validation Data



human brain tissue were subjected to SDS PAGE followed by western blot with 18940-1-AP (NECAB3 antibody) at dilution of 1:500 incubated at room temperature for 1.5 hours.



Immunohistochemical analysis of paraffin-embedded human pancreas using 18940-1-AP (NECAB3 antibody) at dilution of 1:100 (under 10x lens).



Immunohistochemical analysis of paraffin-embedded human pancreas using 18940-1-AP (NECAB3 antibody) at dilution of 1:100 (under 40x lens).