

For Research Use Only

# NDC80 Polyclonal antibody

Catalog Number: 18932-1-AP **5 Publications**



## Basic Information

<b>Catalog Number:</b> 18932-1-AP	<b>GenBank Accession Number:</b> BC035617	<b>Purification Method:</b> Antigen affinity purification
<b>Size:</b> 150ul, Concentration: 300 µg/ml by Nanodrop and 200 µg/ml by Bradford method using BSA as the standard;	<b>GeneID (NCBI):</b> 10403	<b>Recommended Dilutions:</b> WB 1:1000-1:4000 IP 0.5-4.0 ug for 1.0-3.0 mg of total protein lysate IHC 1:20-1:200 IF 1:200-1:800
<b>Source:</b> Rabbit	<b>UNIPROT ID:</b> O14777	
<b>Isotype:</b> IgG	<b>Full Name:</b> NDC80 homolog, kinetochore complex component (S. cerevisiae)	
<b>Immunogen Catalog Number:</b> AG8065	<b>Calculated MW:</b> 74 kDa	
	<b>Observed MW:</b> 76 kDa	

## Applications

<b>Tested Applications:</b> WB, IP, IF, IHC, ELISA	<b>Positive Controls:</b> WB : HeLa cells, A2780 cells, human spleen tissue, Jurkat cells, mouse testis tissue IP : A2780 cells, IHC : human brain tissue, IF : A549 cells,
<b>Cited Applications:</b> WB, IP, IHC	
<b>Species Specificity:</b> human, rat, mouse	
<b>Cited Species:</b> human	

**Note-IHC: suggested antigen retrieval with TE buffer pH 9.0; (\*) Alternatively, antigen retrieval may be performed with citrate buffer pH 6.0**

## Notable Publications

Author	Pubmed ID	Journal	Application
Yanwei Liu	26468983	Oncotarget	WB
Yu-Chia Chen	29606879	Onco Targets Ther	WB
Xi Chen	36105209	Front Pharmacol	WB,IHC

## Storage

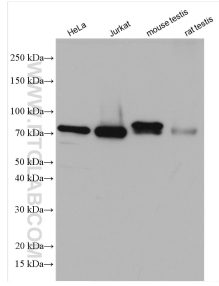
**Storage:**  
Store at -20°C. Stable for one year after shipment.  
**Storage Buffer:**  
PBS with 0.02% sodium azide and 50% glycerol pH 7.3.  
Aliquoting is unnecessary for -20°C storage

\*\*\* 20ul sizes contain 0.1% BSA

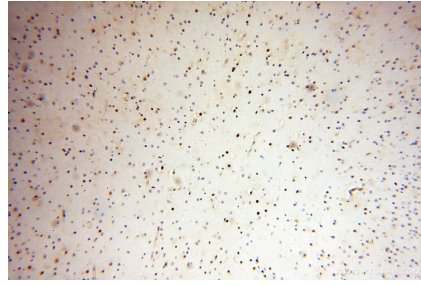
For technical support and original validation data for this product please contact:  
T: 1 (888) 4PTGLAB (1-888-478-4522) (toll free in USA), or 1(312) 455-8498 (outside USA)  
E: proteintech@ptglab.com  
W: ptglab.com

This product is exclusively available under Proteintech Group brand and is not available to purchase from any other manufacturer.

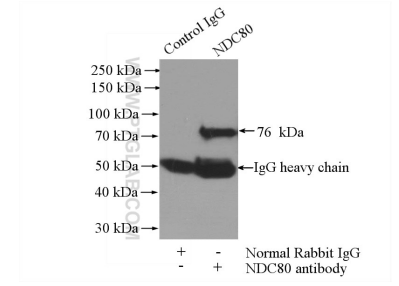
## Selected Validation Data



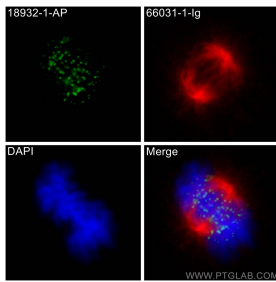
Various lysates were subjected to SDS PAGE followed by western blot with 18932-1-AP (NDC80 antibody) at dilution of 1:2000 incubated at room temperature for 1.5 hours.



Immunohistochemical analysis of paraffin-embedded human brain using 18932-1-AP (NDC80 antibody) at dilution of 1:100 (under 10x lens).



IP result of anti-NDC80 (IP:18932-1-AP, 4ug; Detection:18932-1-AP 1:500) with A2780 cells lysate 960ug.



Immunofluorescent analysis of (4% PFA) fixed A549 cells using NDC80 antibody (18932-1-AP) at dilution of 1:400 and Coralite®488-Conjugated AffiniPure Goat Anti-Rabbit IgG(H+L) (SA00013-2), Alpha Tubulin antibody (66031-1-Ig, Clone: 1E4C11, red).