

For Research Use Only

ITM2A Polyclonal antibody

Catalog Number: 18306-1-AP **6 Publications**



Basic Information

Catalog Number: 18306-1-AP	GenBank Accession Number: BC040437	Purification Method: Antigen affinity purification
Size: 150ul , Concentration: 300 µg/ml by Nanodrop;	GeneID (NCBI): 9452	Recommended Dilutions: WB 1:5000-1:50000
Source: Rabbit	Full Name: integral membrane protein 2A	
Isotype: IgG	Calculated MW: 30 kDa	
	Observed MW: 32 kDa	

Applications

Tested Applications: FC, WB, ELISA	Positive Controls: WB : A549 cells, HepG2 cells, Jurkat cells
Cited Applications: FC, IF, IHC, WB	
Species Specificity: human, mouse, rat	
Cited Species: human, mouse	

Background Information

ITM2A, also named BRICD2A and E25A, is a member of type II integral membrane (ITM2) protein family. ITM2A expression is high in osteogenic and lymphoid tissues, while both ITM2B and ITM2C are expressed in brain. There are 5 articles specifically referring to this gene in PubMed. Proteins are expected to localize in various compartments (cytoplasm, integral to membrane). No phenotype has yet been reported to our knowledge: this gene's in vivo function is yet unknown.

Notable Publications

Author	Pubmed ID	Journal	Application
Alicia A Cutler	35733848	iScience	IF
Céline Cegarra	35313913	Fluids Barriers CNS	IF
Makiko Kihara	25079563	PLoS One	IHC

Storage

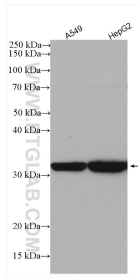
Storage:
Store at -20°C. Stable for one year after shipment.
Storage Buffer:
PBS with 0.02% sodium azide and 50% glycerol pH 7.3.
Aliquoting is unnecessary for -20°C storage

*** 20ul sizes contain 0.1% BSA

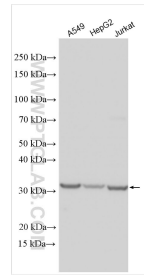
For technical support and original validation data for this product please contact:
T: 1 (888) 4PTGLAB (1-888-478-4522) (toll free in USA), or 1(312) 455-8498 (outside USA)
E: proteintech@ptglab.com
W: ptglab.com

This product is exclusively available under Proteintech Group brand and is not available to purchase from any other manufacturer.

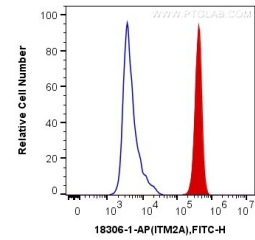
Selected Validation Data



Various lysates were subjected to SDS PAGE followed by western blot with 18306-1-AP (ITM2A antibody) at dilution of 1:1000 incubated at room temperature for 1.5 hours.



Various lysates were subjected to SDS PAGE followed by western blot with 18306-1-AP (ITM2A antibody) at dilution of 1:15000 incubated at room temperature for 1.5 hours.



1X10⁶ Jurkat cells were intracellularly stained with 0.2 ug Anti-Human ITM2A (18306-1-AP) and CoraLite®488-Conjugated AffiniPure Goat Anti-Rabbit IgG(H+L) at dilution 1:1000 (red), or 0.2 ug Control Antibody. Cells were fixed with 4% PFA and permeabilized with Flow Cytometry Perm Buffer (PF00011-C).