

For Research Use Only

MYL6 Polyclonal antibody

Catalog Number: 18158-1-AP



Basic Information

Catalog Number: 18158-1-AP	GenBank Accession Number: BC006781	Purification Method: Antigen affinity purification
Size: 150ul , Concentration: 350 µg/ml by Nanodrop;	GeneID (NCBI): 4637	Recommended Dilutions: WB 1:500-1:2000 IF 1:200-1:800
Source: Rabbit	Full Name: myosin, light chain 6, alkali, smooth muscle and non-muscle	
Isotype: IgG	Calculated MW: 17 kDa	
Immunogen Catalog Number: AG12964	Observed MW: 15-20 kDa	

Applications

Tested Applications: IF, WB, ELISA	Positive Controls:
Species Specificity: human, mouse, rat	WB : mouse uterus tissue, rat uterus tissue IF : HeLa cells,

Background Information

Myosin is a hexameric ATPase cellular motor protein. It is composed of two heavy chains, two nonphosphorylatable alkali light chains, and two phosphorylatable regulatory light chains. MYL6 (Myosin light polypeptide 6), encodes a myosin alkali light chain that is expressed in smooth muscle and non-muscle tissues. Expression of MYL6 is high in fibroblasts and myoblasts (PMID:8188229, PubMed:2304459, PMID:2722814).

Storage

Storage:
Store at -20°C. Stable for one year after shipment.
Storage Buffer:
PBS with 0.02% sodium azide and 50% glycerol pH 7.3.
Aliquoting is unnecessary for -20°C storage

***** 20ul sizes contain 0.1%BSA**

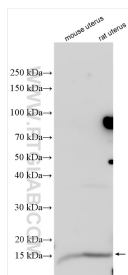
For technical support and original validation data for this product please contact:

T: 1 (888) 4PTGLAB (1-888-478-4522) (toll free in USA), or 1(312) 455-8498 (outside USA)

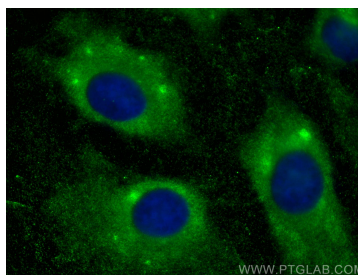
E: proteintech@ptglab.com
W: ptglab.com

This product is exclusively available under Proteintech Group brand and is not available to purchase from any other manufacturer.

Selected Validation Data



Various lysates were subjected to SDS PAGE followed by western blot with 18158-1-AP (MYL6 antibody) at dilution of 1:1000 incubated at room temperature for 1.5 hours.



Immunofluorescent analysis of (-20°C Methanol) fixed HeLa cells using MYL6 antibody (18158-1-AP) at dilution of 1:400 and CoraLite®488-Conjugated AffiniPure Goat Anti-Rabbit IgG(H+L).