

For Research Use Only

# EIF2B1 Polyclonal antibody

Catalog Number: 18010-1-AP

Featured Product

9 Publications



## Basic Information

<b>Catalog Number:</b> 18010-1-AP	<b>GenBank Accession Number:</b> BC103763	<b>Purification Method:</b> Antigen affinity purification
<b>Size:</b> 150ul, Concentration: 500 µg/ml by Nanodrop and 307 µg/ml by Bradford method using BSA as the standard;	<b>GeneID (NCBI):</b> 1967	<b>Recommended Dilutions:</b> WB 1:500-1:2000 IP 0.5-4.0 ug for IP and 1:500-1:1000 for WB
<b>Source:</b> Rabbit	<b>Full Name:</b> eukaryotic translation initiation factor 2B, subunit 1 alpha, 26kDa	<b>IHC 1:50-1:500</b> <b>IF 1:10-1:100</b>
<b>Isotype:</b> IgG	<b>Calculated MW:</b> 305 aa, 34 kDa	
<b>Immunogen Catalog Number:</b> AG12509	<b>Observed MW:</b> 34 kDa	

## Applications

<b>Tested Applications:</b> IF, IHC, IP, WB, ELISA	<b>Positive Controls:</b> WB : MCF7 cells, HeLa cells, K-562 cells
<b>Cited Applications:</b> CoIP, IF, WB	<b>IP :</b> K-562 cells,
<b>Species Specificity:</b> human, mouse	<b>IHC :</b> mouse brain tissue, human breast cancer tissue
<b>Cited Species:</b> human, mouse	<b>IF :</b> HeLa cells,

**Note-IHC: suggested antigen retrieval with TE buffer pH 9.0; (\*) Alternatively, antigen retrieval may be performed with citrate buffer pH 6.0**

## Background Information

### Notable Publications

Author	Pubmed ID	Journal	Application
Michael Schoof	33688831	Elife	WB
Noel C Wortham	26614765	Biochem J	WB
Qi Hao	34103529	Nat Commun	WB

## Storage

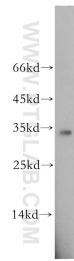
**Storage:**  
Store at -20°C. Stable for one year after shipment.  
**Storage Buffer:**  
PBS with 0.02% sodium azide and 50% glycerol pH 7.3.  
Aliquoting is unnecessary for -20°C storage

\*\*\* 20ul sizes contain 0.1% BSA

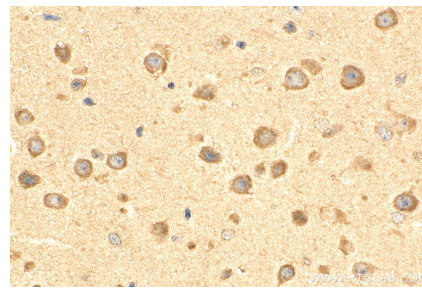
For technical support and original validation data for this product please contact:  
T: 1 (888) 4PTGLAB (1-888-478-4522) (toll free in USA), or 1(312) 455-8498 (outside USA)  
E: proteintech@ptglab.com  
W: ptglab.com

This product is exclusively available under Proteintech Group brand and is not available to purchase from any other manufacturer.

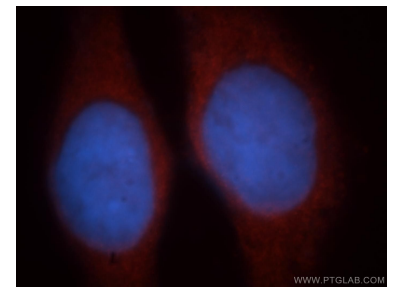
## Selected Validation Data



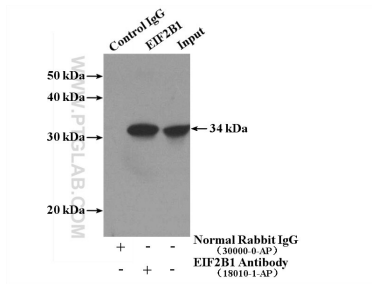
MCF7 cells were subjected to SDS PAGE followed by western blot with 18010-1-AP (EIF2B1 antibody) at dilution of 1:500 incubated at room temperature for 1.5 hours.



Immunohistochemical analysis of paraffin-embedded mouse brain tissue slide using 18010-1-AP (EIF2B1 antibody) at dilution of 1:200 (under 40x lens). Heat mediated antigen retrieval with Tris-EDTA buffer (pH 9.0).



Immunofluorescent analysis of HeLa cells, using EIF2B1 antibody 18010-1-AP at 1:25 dilution and Rhodamine-labeled goat anti-rabbit IgG (red). Blue pseudocolor = DAPI (fluorescent DNA dye).



IP Result of anti-EIF2B1 (IP:18010-1-AP, 4ug; Detection:18010-1-AP 1:700) with K-562 cells lysate 3200ug.