

For Research Use Only

PRKX/PRKY Polyclonal antibody

Catalog Number: 17985-1-AP



Basic Information

Catalog Number: 17985-1-AP	GenBank Accession Number: BC074852	Purification Method: Antigen affinity purification
Size: 150ul , Concentration: 300 µg/ml by Nanodrop and 207 µg/ml by Bradford method using BSA as the standard;	GeneID (NCBI): 5616	Recommended Dilutions: WB 1:500-1:2000
Source: Rabbit	Full Name: protein kinase, Y-linked	
Isotype: IgG	Calculated MW: 277 aa, 32 kDa	
Immunogen Catalog Number: AG12404	Observed MW: 41 kDa	

Applications

Tested Applications: WB, ELISA	Positive Controls: WB : A549 cells, MCF-7 cells, NIH/3T3 cells
Species Specificity: human, mouse	

Background Information

PRKY is a member of the cAMP-dependent serine-threonine protein kinase gene family, which appears to encode a protein related to the catalytic subunit of the cAMP-dependent protein kinases, which are key players in the cellular responses to the second messenger cAMP. A chromosomal aberration involving PRKY is a cause of sex reversal disorder. As a homolog with PRKX, the antibody can recognize endogenous levels of PRKY and PRKX.

Storage

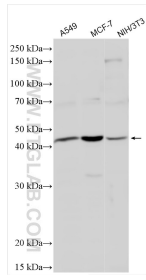
Storage:
Store at -20°C. Stable for one year after shipment.
Storage Buffer:
PBS with 0.02% sodium azide and 50% glycerol pH 7.3.
Aliquoting is unnecessary for -20°C storage

***** 20ul sizes contain 0.1% BSA**

For technical support and original validation data for this product please contact:
T: 1 (888) 4PTGLAB (1-888-478-4522) (toll free in USA), or 1(312) 455-8498 (outside USA) E: proteintech@ptglab.com W: ptglab.com

This product is exclusively available under Proteintech Group brand and is not available to purchase from any other manufacturer.

Selected Validation Data



Various lysates were subjected to SDS PAGE followed by western blot with 17985-1-AP (PRKX/PRKY antibody) at dilution of 1:1000 incubated at room temperature for 1.5 hours.