

For Research Use Only

# DCP2 Polyclonal antibody

Catalog Number: 17744-1-AP



## Basic Information

<b>Catalog Number:</b> 17744-1-AP	<b>GenBank Accession Number:</b> BC064593	<b>Purification Method:</b> Antigen affinity purification
<b>Size:</b> 150ul , Concentration: 600 µg/ml by Nanodrop;	<b>GeneID (NCBI):</b> 167227	<b>Recommended Dilutions:</b> WB 1:1000-1:4000
<b>Source:</b> Rabbit	<b>Full Name:</b> DCP2 decapping enzyme homolog (S. cerevisiae)	
<b>Isotype:</b> IgG	<b>Calculated MW:</b> 385aa,44 kDa; 420aa,48 kDa	
<b>Immunogen Catalog Number:</b> AG12001	<b>Observed MW:</b> 48 kDa	

## Applications

<b>Tested Applications:</b> WB, ELISA	<b>Positive Controls:</b> WB : HepG2 cells, Caco-2 cells, T-47D cells
<b>Species Specificity:</b> human	

## Background Information

### Storage

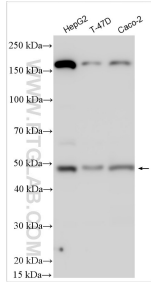
**Storage:**  
Store at -20°C. Stable for one year after shipment.  
**Storage Buffer:**  
PBS with 0.02% sodium azide and 50% glycerol pH 7.3.  
Aliquoting is unnecessary for -20°C storage

\*\*\* 20ul sizes contain 0.1% BSA

For technical support and original validation data for this product please contact:  
T: 1 (888) 4PTGLAB (1-888-478-4522) (toll free in USA), or 1(312) 455-8498 (outside USA)  
E: proteintech@ptglab.com  
W: ptglab.com

This product is exclusively available under Proteintech Group brand and is not available to purchase from any other manufacturer.

## Selected Validation Data



Various lysates were subjected to SDS PAGE followed by western blot with 17744-1-AP (DCP2 antibody) at dilution of 1:2000 incubated at room temperature for 1.5 hours.