

For Research Use Only

BLVRB Polyclonal antibody

Catalog Number: 17727-1-AP **1 Publications**



Basic Information

Catalog Number: 17727-1-AP	GenBank Accession Number: BC109371	Purification Method: Antigen affinity purification
Size: 150ul , Concentration: 450 µg/ml by Nanodrop and 200 µg/ml by Bradford method using BSA as the standard;	GeneID (NCBI): 645	Recommended Dilutions: WB 1:500-1:2000 IHC 1:20-1:200
Source: Rabbit	Full Name: biliverdin reductase B (flavin reductase (NADPH))	
Isotype: IgG	Calculated MW: 206 aa, 22 kDa	
Immunogen Catalog Number: AG12124	Observed MW: 22-27 kDa	

Applications

Tested Applications: IHC, WB, ELISA	Positive Controls: WB : HepG2 cells, human liver tissue, L02 cells, rat liver tissue IHC : human heart tissue, human liver tissue
Cited Applications: WB	
Species Specificity: human, mouse, rat	
Cited Species: mouse	
Note-IHC: suggested antigen retrieval with TE buffer pH 9.0; (*) Alternatively, antigen retrieval may be performed with citrate buffer pH 6.0	

Background Information

Notable Publications

Author	Pubmed ID	Journal	Application
Yinzhong Lu	34373769	Oxid Med Cell Longev	WB

Storage

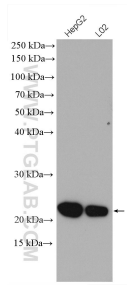
Storage:
Store at -20°C. Stable for one year after shipment.
Storage Buffer:
PBS with 0.02% sodium azide and 50% glycerol pH 7.3.
Aliquoting is unnecessary for -20°C storage

*** 20ul sizes contain 0.1% BSA

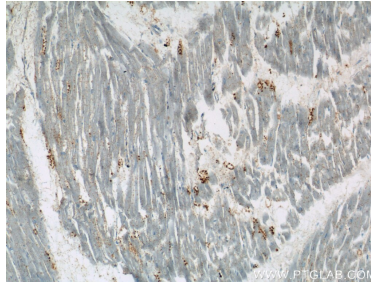
For technical support and original validation data for this product please contact:
T: 1 (888) 4PTGLAB (1-888-478-4522) (toll free in USA), or 1(312) 455-8498 (outside USA) E: proteintech@ptglab.com
W: ptglab.com

This product is exclusively available under Proteintech Group brand and is not available to purchase from any other manufacturer.

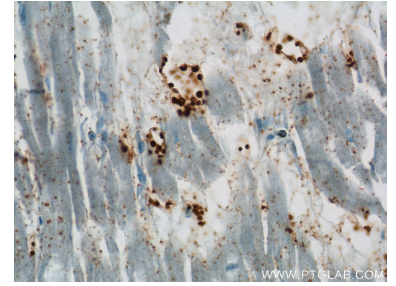
Selected Validation Data



Various lysates were subjected to SDS PAGE followed by western blot with 17727-1-AP (BLVRB antibody) at dilution of 1:1000 incubated at 4 degree celsius over night.



Immunohistochemical analysis of paraffin-embedded human heart tissue slide using 17727-1-AP (BLVRB Antibody) at dilution of 1:50 (under 10x lens).



Immunohistochemical analysis of paraffin-embedded human heart tissue slide using 17727-1-AP (BLVRB Antibody) at dilution of 1:50 (under 40x lens).