

For Research Use Only

PM20D2 Polyclonal antibody

Catalog Number: 17705-1-AP



Basic Information

Catalog Number: 17705-1-AP	GenBank Accession Number: BC035036	Purification Method: Antigen affinity purification
Size: 150ul , Concentration: 200 µg/ml by Nanodrop and 140 µg/ml by Bradford method using BSA as the standard;	GeneID (NCBI): 135293	Recommended Dilutions: WB 1:500-1:1000 IHC 1:20-1:200
Source: Rabbit	Full Name: peptidase M20 domain containing 2	
Isotype: IgG	Calculated MW: 436 aa, 48 kDa	
Immunogen Catalog Number: AG11991	Observed MW: 48 kDa	

Applications

Tested Applications:

IHC, WB, ELISA

Species Specificity:

human, mouse, rat

Note-IHC: suggested antigen retrieval with TE buffer pH 9.0; (*) Alternatively, antigen retrieval may be performed with citrate buffer pH 6.0

Positive Controls:

WB : HeLa cells,

IHC : human placenta tissue, human kidney tissue, human ovary tissue, human testis tissue

Background Information

Storage

Storage:

Store at -20°C. Stable for one year after shipment.

Storage Buffer:

PBS with 0.02% sodium azide and 50% glycerol pH 7.3.

Aliquoting is unnecessary for -20°C storage

*** 20ul sizes contain 0.1% BSA

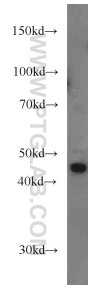
For technical support and original validation data for this product please contact:

T: 1 (888) 4PTGLAB (1-888-478-4522) (toll free in USA), or 1(312) 455-8498 (outside USA)

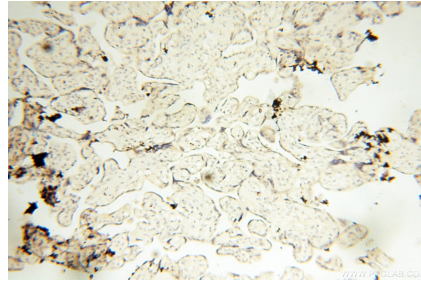
E: proteintech@ptglab.com
W: ptglab.com

This product is exclusively available under Proteintech Group brand and is not available to purchase from any other manufacturer.

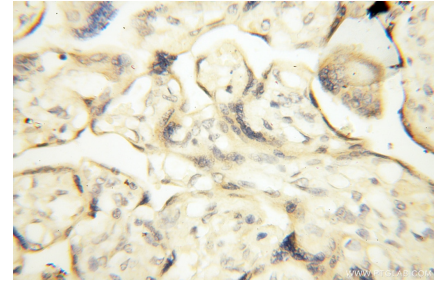
Selected Validation Data



HeLa cells were subjected to SDS PAGE followed by western blot with 17705-1-AP (PM20D2 antibody) at dilution of 1:1000 incubated at room temperature for 1.5 hours.



Immunohistochemical analysis of paraffin-embedded human placenta using 17705-1-AP (PM20D2 antibody) at dilution of 1:50 (under 10x lens).



Immunohistochemical analysis of paraffin-embedded human placenta using 17705-1-AP (PM20D2 antibody) at dilution of 1:50 (under 40x lens).