

For Research Use Only

# RPL26 Polyclonal antibody

Catalog Number: 17619-1-AP

Featured Product

5 Publications



## Basic Information

<b>Catalog Number:</b> 17619-1-AP	<b>GenBank Accession Number:</b> BC071664	<b>Purification Method:</b> Antigen affinity purification
<b>Size:</b> 150ul , Concentration: 700 µg/ml by Nanodrop and 347 µg/ml by Bradford method using BSA as the standard;	<b>GeneID (NCBI):</b> 6154	<b>Recommended Dilutions:</b> WB 1:500-1:1000 IF 1:50-1:500
<b>Source:</b> Rabbit	<b>Full Name:</b> ribosomal protein L26	
<b>Isotype:</b> IgG	<b>Calculated MW:</b> 145 aa, 17 kDa	
<b>Immunogen Catalog Number:</b> AG11821	<b>Observed MW:</b> 17-22 kDa	

## Applications

<b>Tested Applications:</b> IF, WB, ELISA	<b>Positive Controls:</b> WB : K-562 cells, HeLa cells, HepG2 cells, Jurkat cells IF : HeLa cells,
<b>Cited Applications:</b> CoIP, IHC, WB	
<b>Species Specificity:</b> human	
<b>Cited Species:</b> human	

## Background Information

### Notable Publications

Author	Pubmed ID	Journal	Application
Meijuan Zou	33371207	Genes (Basel)	WB
Wonyul Jang	36520888	Science	WB
Sunwang Xu	31792210	Nat Commun	WB

## Storage

**Storage:**  
Store at -20°C. Stable for one year after shipment.  
**Storage Buffer:**  
PBS with 0.02% sodium azide and 50% glycerol pH 7.3.  
Aliquoting is unnecessary for -20°C storage

\*\*\* 20ul sizes contain 0.1% BSA

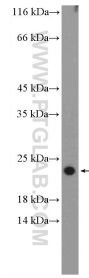
For technical support and original validation data for this product please contact:  
T: 1 (888) 4PTGLAB (1-888-478-4522) (toll free in USA), or 1(312) 455-8498 (outside USA)  
E: proteintech@ptglab.com  
W: ptglab.com

This product is exclusively available under Proteintech Group brand and is not available to purchase from any other manufacturer.

## Selected Validation Data



Immunofluorescent analysis of (4% PFA) fixed HeLa cells using RPL26 antibody (17619-1-AP) at dilution of 1:200 and CoraLite®488-Conjugated AffiniPure Goat Anti-Rabbit IgG(H+L), CL594-phalloidin (red).



K-562 cells were subjected to SDS PAGE followed by western blot with 17619-1-AP (RPL26 Antibody) at dilution of 1:600 incubated at room temperature for 1.5 hours.