

For Research Use Only

MTMR15 Polyclonal antibody

Catalog Number: 17600-1-AP

Featured Product

3 Publications



Basic Information

Catalog Number: 17600-1-AP	GenBank Accession Number: BC047882	Purification Method: Antigen affinity purification
Size: 150ul , Concentration: 780 µg/ml by Nanodrop;	GeneID (NCBI): 22909	Recommended Dilutions: WB 1:500-1:1000 IP 0.5-4.0 ug for 1.0-3.0 mg of total protein lysate
Source: Rabbit	Full Name: myotubularin related protein 15	
Isotype: IgG	Calculated MW: 60 kDa, 114 kDa	
Immunogen Catalog Number: AG11651	Observed MW: 63-68 kDa, 120-140 kDa	

Applications

Tested Applications: IP, WB, ELISA	Positive Controls: WB : HeLa cells, human spleen tissue IP : HeLa cells,
Cited Applications: IP, WB	
Species Specificity: human	
Cited Species: human	

Background Information

MTMR15, also named as FAN1 and KIAA1018, is a nuclease required for the repair of DNA interstrand cross-links (ICL) recruited at sites of DNA damage by monoubiquitinated FANCD2. It is specifically involved in repair of ICL-induced DNA breaks by being required for efficient homologous recombination, probably in the resolution of homologous recombination intermediates. MTMR15 has some isoforms with MW 114 kDa and 60 kDa. The MW will be migrated to 120-140 kDa and 63-68 kDa with modification.

Notable Publications

Author	Pubmed ID	Journal	Application
Shaozu Fu	35613597	Cell Rep	WB
Xinlin Xu	34117478	Nat Struct Mol Biol	WB
Mihoko Rikitake	31955481	Genes Cells	WB,IP

Storage

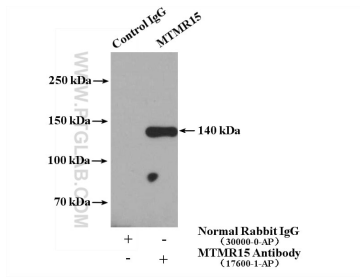
Storage:
Store at -20°C. Stable for one year after shipment.
Storage Buffer:
PBS with 0.02% sodium azide and 50% glycerol pH 7.3.
Aliquoting is unnecessary for -20°C storage

*** 20ul sizes contain 0.1% BSA

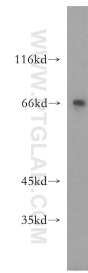
For technical support and original validation data for this product please contact:
T: 1 (888) 4PTGLAB (1-888-478-4522) (toll free in USA), or 1(312) 455-8498 (outside USA)
E: proteintech@ptglab.com
W: ptglab.com

This product is exclusively available under Proteintech Group brand and is not available to purchase from any other manufacturer.

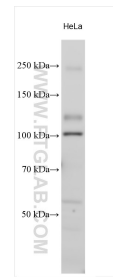
Selected Validation Data



IP result of anti-MTMR15 (IP:17600-1-AP, 4 μ g; Detection:17600-1-AP 1:300) with HeLa cells lysate 2800 μ g.



HeLa cells were subjected to SDS PAGE followed by western blot with 17600-1-AP (MTMR15 antibody) at dilution of 1:300 incubated at room temperature for 1.5 hours.



Various lysates were subjected to SDS PAGE followed by western blot with 17600-1-AP (MTMR15 antibody) at dilution of 1:1000 incubated at room temperature for 1.5 hours.