

For Research Use Only

GUF1 Polyclonal antibody

Catalog Number: 17489-1-AP

Featured Product



Basic Information

Catalog Number: 17489-1-AP	GenBank Accession Number: BC036768	Purification Method: Antigen affinity purification
Size: 150ul, Concentration: 500 µg/ml by Nanodrop;	GeneID (NCBI): 60558	Recommended Dilutions: WB 1:500-1:2400 IP 0.5-4.0 ug for IP and 1:500-1:1000
Source: Rabbit	Full Name: GUF1 GTPase homolog (S. cerevisiae)	for WB IHC 1:20-1:200 IF 1:10-1:100
Isotype: IgG	Calculated MW: 669 aa, 74 kDa	
Immunogen Catalog Number: AG11579	Observed MW: 70 kDa	

Applications

Tested Applications:

IF, IHC, IP, WB, ELISA

Species Specificity:

human, mouse

Note-IHC: suggested antigen retrieval with TE buffer pH 9.0; (*) Alternatively, antigen retrieval may be performed with citrate buffer pH 6.0

Positive Controls:

WB: HeLa cells, mouse brain tissue, HepG2 cells, mouse pancreas tissue

IP: HeLa cells,

IHC: human oesophagus tissue, human lung cancer tissue, human kidney tissue, human testis tissue

IF: HepG2 cells,

Background Information

GUF1 (GUF1 GTPase), also known as EF-4 (elongation factor 4 homolog), is a 669 amino acid protein belonging to the GTP-binding elongation factor family and the LepA subfamily. Localizing to the mitochondrion inner membrane, GUF1 promotes mitochondrial protein synthesis and binds to mitochondrial ribosomes in a GTP-dependent manner. GUF1 may act as a fidelity factor of the translation reaction, by catalyzing a one-codon backward translocation of tRNAs on improperly translocated ribosomes. In western blotting, we got double bands 74 kDa and 70 kDa, due to the N-terminal 1-49 amino acid sequence that could be cut down.

Storage

Storage:

Store at -20°C. Stable for one year after shipment.

Storage Buffer:

PBS with 0.02% sodium azide and 50% glycerol pH 7.3.

Aliquoting is unnecessary for -20°C storage

*** 20ul sizes contain 0.1% BSA

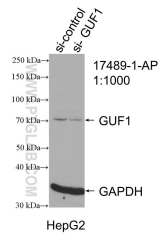
For technical support and original validation data for this product please contact:

T: 1 (888) 4PTGLAB (1-888-478-4522) (toll free in USA), or 1(312) 455-8498 (outside USA)

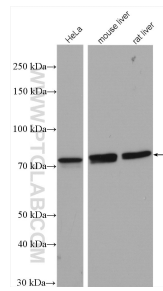
E: proteintech@ptglab.com
W: ptglab.com

This product is exclusively available under Proteintech Group brand and is not available to purchase from any other manufacturer.

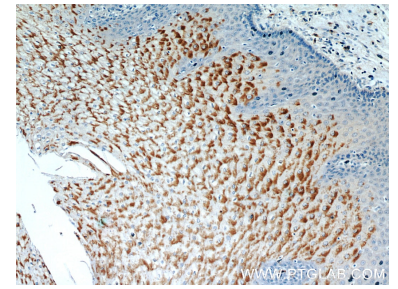
Selected Validation Data



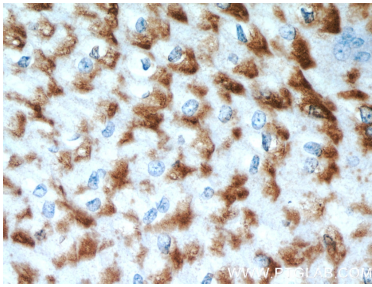
WB result of GUF1 antibody (17489-1-AP; 1:1000; incubated at room temperature for 1.5 hours) with sh-Control and sh-GUF1 transfected HepG2 cells.



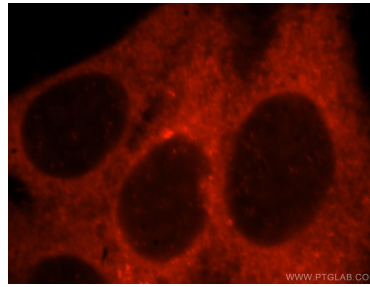
Various lysates were subjected to SDS PAGE followed by western blot with 17489-1-AP (GUF1 antibody) at dilution of 1:2000 incubated at room temperature for 1.5 hours.



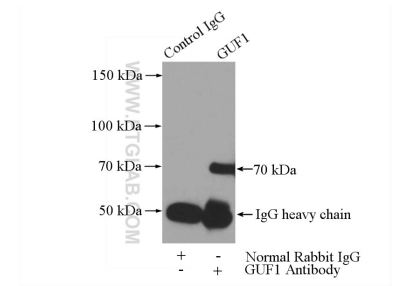
Immunohistochemical analysis of paraffin-embedded human oesophagus using 17489-1-AP (GUF1 antibody) at dilution of 1:50 (under 10x lens).



Immunohistochemical analysis of paraffin-embedded human oesophagus using 17489-1-AP (GUF1 antibody) at dilution of 1:50 (under 40x lens).



Immunofluorescent analysis of HepG2 cells, using GUF1 antibody 17489-1-AP at 1:25 dilution and Rhodamine-labeled goat anti-rabbit IgG (red).



IP Result of anti-GUF1 (IP:17489-1-AP, 3ug; Detection:17489-1-AP 1:500) with HeLa cells lysate 3200ug.