

For Research Use Only

# LUZP1 Polyclonal antibody

Catalog Number: 17483-1-AP **8 Publications**



## Basic Information

<b>Catalog Number:</b> 17483-1-AP	<b>GenBank Accession Number:</b> BC051733	<b>Purification Method:</b> Antigen affinity purification
<b>Size:</b> 150ul , Concentration: 650 µg/ml by Nanodrop;	<b>GeneID (NCBI):</b> 7798	<b>Recommended Dilutions:</b> WB 1:5000-1:50000 IP 0.5-4.0 ug for 1.0-3.0 mg of total protein lysate
<b>Source:</b> Rabbit	<b>Full Name:</b> leucine zipper protein 1	
<b>Isotype:</b> IgG	<b>Calculated MW:</b> 1026 aa, 115 kDa	
<b>Immunogen Catalog Number:</b> AG11518	<b>Observed MW:</b> 120 kDa	

## Applications

<b>Tested Applications:</b> IP, WB, ELISA	<b>Positive Controls:</b> WB : mouse brain tissue, rat brain tissue IP : mouse brain tissue,
<b>Cited Applications:</b> IF, IP, WB	
<b>Species Specificity:</b> human, mouse, rat	
<b>Cited Species:</b> human, rat, mouse	

## Background Information

LUZP1, also known as LUZP, is predominantly expressed in the brain, whereas it is present in the nucleus of neurons. LUZP1 is a centrosome, actin, and midbody-localizing protein implicated in ciliogenesis regulation and actin cytoskeleton stability (PMID: 33869174). LUZP1 null mice present defective neural tube closure and cardiovascular problems, which cause perinatal death. In addition, LUZP1 has also been implicated in the etiology of diseases like the 1p36 and the Townes-Brocks syndromes (PMID: 35738212).

## Notable Publications

Author	Pubmed ID	Journal	Application
Xuchen Dong	34869035	Front Oncol	WB
Laura Bozal-Basterra	32553112	Elife	WB
João Gonçalves	35738212	Eur J Cell Biol	

## Storage

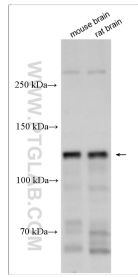
**Storage:**  
Store at -20°C. Stable for one year after shipment.  
**Storage Buffer:**  
PBS with 0.02% sodium azide and 50% glycerol pH 7.3.  
Aliquoting is unnecessary for -20°C storage

\*\*\* 20ul sizes contain 0.1% BSA

For technical support and original validation data for this product please contact:  
T: 1 (888) 4PTGLAB (1-888-478-4522) (toll free in USA), or 1(312) 455-8498 (outside USA) E: proteintech@ptglab.com W: ptglab.com

This product is exclusively available under Proteintech Group brand and is not available to purchase from any other manufacturer.

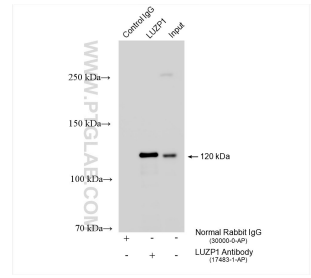
## Selected Validation Data



Various lysates were subjected to SDS PAGE followed by western blot with 17483-1-AP (LUZP1 antibody) at dilution of 1:15000 incubated at room temperature for 1.5 hours.



mouse brain tissue were subjected to SDS PAGE followed by western blot with 17483-1-AP (LUZP1 antibody) at dilution of 1:500 incubated at room temperature for 1.5 hours.



IP result of anti-LUZP1(IP:17483-1-AP, 4ug; Detection:17483-1-AP 1:10000) with mouse brain tissue lysate 1680 ug.