

For Research Use Only

# EVI2A Polyclonal antibody

Catalog Number: 17415-1-AP **1 Publications**



## Basic Information

<b>Catalog Number:</b> 17415-1-AP	<b>GenBank Accession Number:</b> BC035572	<b>Purification Method:</b> Antigen affinity purification
<b>Size:</b> 150ul , Concentration: 350 µg/ml by Nanodrop and 153 µg/ml by Bradford method using BSA as the standard;	<b>GeneID (NCBI):</b> 2123	<b>Recommended Dilutions:</b> WB 1:500-1:2000 IHC 1:20-1:200 IF 1:10-1:100
<b>Source:</b> Rabbit	<b>Full Name:</b> ecotropic viral integration site 2A	
<b>Isotype:</b> IgG	<b>Calculated MW:</b> 236 aa, 26 kDa	
<b>Immunogen Catalog Number:</b> AG11075	<b>Observed MW:</b> 26 kDa	

## Applications

<b>Tested Applications:</b> IF, IHC, WB, ELISA	<b>Positive Controls:</b> WB : human brain tissue, IHC : human brain tissue, IF : HepG2 cells,
<b>Cited Applications:</b> WB	
<b>Species Specificity:</b> human	
<b>Cited Species:</b> human	

**Note-IHC: suggested antigen retrieval with TE buffer pH 9.0; (\*) Alternatively, antigen retrieval may be performed with citrate buffer pH 6.0**

## Background Information

### Notable Publications

Author	Pubmed ID	Journal	Application
Anke Graessel	25991687	Mol Cell Proteomics	WB

## Storage

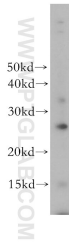
**Storage:**  
Store at -20°C. Stable for one year after shipment.  
**Storage Buffer:**  
PBS with 0.02% sodium azide and 50% glycerol pH 7.3.  
Aliquoting is unnecessary for -20°C storage

\*\*\* 20ul sizes contain 0.1% BSA

For technical support and original validation data for this product please contact:  
T: 1 (888) 4PTGLAB (1-888-478-4522) (toll free in USA), or 1(312) 455-8498 (outside USA) E: proteintech@ptglab.com W: ptglab.com

This product is exclusively available under Proteintech Group brand and is not available to purchase from any other manufacturer.

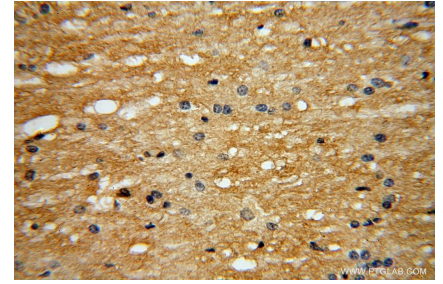
## Selected Validation Data



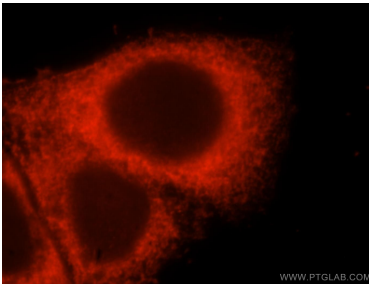
human brain tissue were subjected to SDS PAGE followed by western blot with 17415-1-AP (EVI2A antibody) at dilution of 1:300 incubated at room temperature for 1.5 hours.



Immunohistochemical analysis of paraffin-embedded human brain using 17415-1-AP (EVI2A antibody) at dilution of 1:100 (under 10x lens).



Immunohistochemical analysis of paraffin-embedded human brain using 17415-1-AP (EVI2A antibody) at dilution of 1:100 (under 40x lens).



Immunofluorescent analysis of HepG2 cells, using EVI2A antibody 17415-1-AP at 1:25 dilution and Rhodamine-labeled goat anti-rabbit IgG (red).