

For Research Use Only

PDCL2 Polyclonal antibody

Catalog Number: 17407-1-AP **2 Publications**



Basic Information

Catalog Number: 17407-1-AP	GenBank Accession Number: BC034431	Purification Method: Antigen affinity purification
Size: 150ul, Concentration: 600 µg/ml by Nanodrop and 333 µg/ml by Bradford method using BSA as the standard;	GeneID (NCBI): 132954	Recommended Dilutions: WB 1:500-1:4000 IHC 1:20-1:200
Source: Rabbit	Full Name: phosducin-like 2	
Isotype: IgG	Calculated MW: 250 aa, 29 kDa	
Immunogen Catalog Number: AG11427	Observed MW: 30-35 kDa	

Applications

Tested Applications: IHC, WB, ELISA	Positive Controls:
Cited Applications: IF, IHC, WB	WB: mouse testis tissue, rat testis tissue
Species Specificity: human, mouse, rat	IHC: human kidney tissue, human ovary tissue, human spleen tissue, human testis tissue
Cited Species: human, mouse	
Note-IHC: suggested antigen retrieval with TE buffer pH 9.0; (*) Alternatively, antigen retrieval may be performed with citrate buffer pH 6.0	

Background Information

Notable Publications

Author	Pubmed ID	Journal	Application
Yoshitaka Fujihara	36278277	Andrology	WB,IF
Yu Yang	37554526	Transl Androl Urol	IHC

Storage

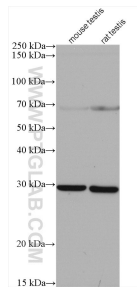
Storage:
Store at -20°C. Stable for one year after shipment.
Storage Buffer:
PBS with 0.02% sodium azide and 50% glycerol pH 7.3.
Aliquoting is unnecessary for -20°C storage

*** 20ul sizes contain 0.1% BSA

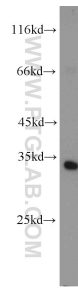
For technical support and original validation data for this product please contact:
T: 1 (888) 4PTGLAB (1-888-478-4522) (toll free in USA), or 1(312) 455-8498 (outside USA)
E: proteintech@ptglab.com
W: ptglab.com

This product is exclusively available under Proteintech Group brand and is not available to purchase from any other manufacturer.

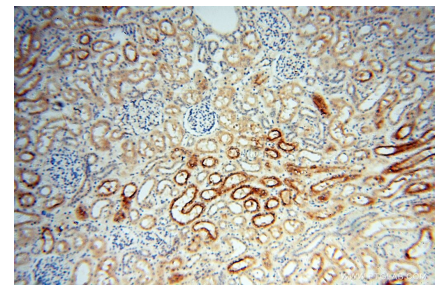
Selected Validation Data



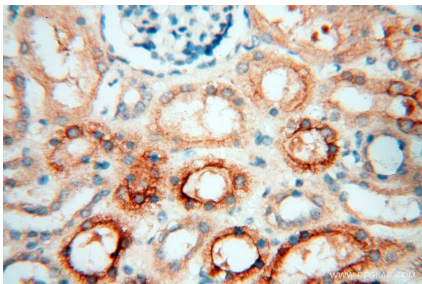
Various lysates were subjected to SDS PAGE followed by western blot with 17407-1-AP (PDCL2 antibody) at dilution of 1:4000 incubated at room temperature for 1.5 hours.



mouse testis tissue were subjected to SDS PAGE followed by western blot with 17407-1-AP (PDCL2 antibody) at dilution of 1:500 incubated at room temperature for 1.5 hours.



Immunohistochemical analysis of paraffin-embedded human kidney using 17407-1-AP (PDCL2 antibody) at dilution of 1:50 (under 10x lens).



Immunohistochemical analysis of paraffin-embedded human kidney using 17407-1-AP (PDCL2 antibody) at dilution of 1:50 (under 40x lens).