

For Research Use Only

GSG1L Polyclonal antibody

Catalog Number: 17328-1-AP **1 Publications**



Basic Information

Catalog Number: 17328-1-AP	GenBank Accession Number: BC016460	Purification Method: Antigen affinity purification
Size: 150ul , Concentration: 450 µg/ml by Nanodrop and 213 µg/ml by Bradford method using BSA as the standard;	GeneID (NCBI): 146395	Recommended Dilutions: WB 1:500-1:2000 IHC 1:20-1:200
Source: Rabbit	Full Name: GSG1-like	
Isotype: IgG	Calculated MW: 176 aa, 21 kDa	
Immunogen Catalog Number: AG11307	Observed MW: 36-43 kDa	

Applications

Tested Applications:

IHC, WB, ELISA

Species Specificity:

human

Cited Species:

rat

Note-IHC: suggested antigen retrieval with TE buffer pH 9.0; (*) Alternatively, antigen retrieval may be performed with citrate buffer pH 6.0

Positive Controls:

WB: Raji cells, U-251 cells, SGC-7901 cells, mouse brain tissue, mouse liver tissue, rat brain tissue, rat liver tissue

IHC: human tonsillitis tissue,

Background Information

GSG1L is a component of the inner core of AMPAR complex. It modifies AMPA receptor (AMPA) gating. GSG1L is mainly present on B lymphocytes. This antibody can recognize all the 4 isoforms of GSG1L. GSG1L was detected the isoform of 43 kDa in rat brain (PMID: 22813734).

Notable Publications

Author	Pubmed ID	Journal	Application
Amanda M Perozzo	37884493	Nat Commun	

Storage

Storage:

Store at -20°C. Stable for one year after shipment.

Storage Buffer:

PBS with 0.02% sodium azide and 50% glycerol pH 7.3.

Aliquoting is unnecessary for -20°C storage

***** 20ul sizes contain 0.1% BSA**

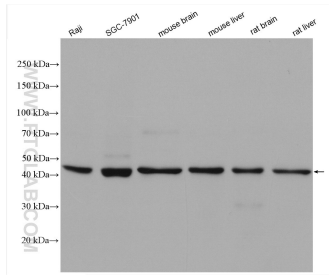
For technical support and original validation data for this product please contact:

T: 1 (888) 4PTGLAB (1-888-478-4522) (toll free in USA), or 1(312) 455-8498 (outside USA)

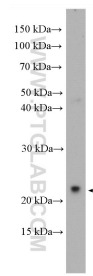
E: proteintech@ptglab.com
W: ptglab.com

This product is exclusively available under Proteintech Group brand and is not available to purchase from any other manufacturer.

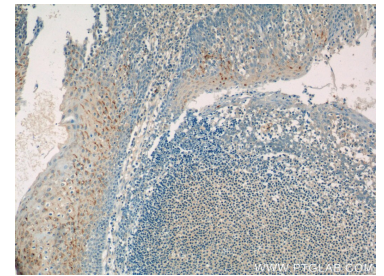
Selected Validation Data



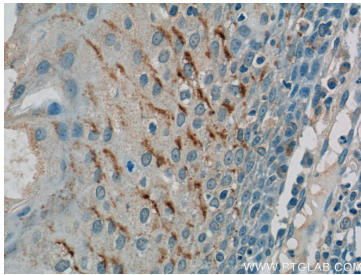
Various lysates were subjected to SDS PAGE followed by western blot with 17328-1-AP (GSG1L antibody) at dilution of 1:1000 incubated at room temperature for 1.5 hours.



U-251 cells were subjected to SDS PAGE followed by western blot with 17328-1-AP (GSG1L antibody) at dilution of 1:300 incubated at room temperature for 1.5 hours.



Immunohistochemical analysis of paraffin-embedded human tonsillitis tissue slide using 17328-1-AP (GSG1L Antibody) at dilution of 1:50 (under 10x lens).



Immunohistochemical analysis of paraffin-embedded human tonsillitis tissue slide using 17328-1-AP (GSG1L Antibody) at dilution of 1:50 (under 40x lens).