

For Research Use Only

CLYBL Polyclonal antibody

Catalog Number: 17314-1-AP **1 Publications**



Basic Information

Catalog Number: 17314-1-AP	GenBank Accession Number: BC034360	Purification Method: Antigen affinity purification
Size: 150ul , Concentration: 600 µg/ml by Nanodrop;	GeneID (NCBI): 171425	Recommended Dilutions: WB 1:1000-1:4000 IHC 1:50-1:500
Source: Rabbit	Full Name: citrate lyase beta like	
Isotype: IgG	Calculated MW: 340 aa, 37 kDa	
Immunogen Catalog Number: AG11283	Observed MW: 37 kDa	

Applications

Tested Applications: IHC, WB, ELISA	Positive Controls:
Cited Applications: WB	WB : HepG2 cells, human heart tissue, Jurkat cells, THP-1 cells
Species Specificity: human, mouse, rat	IHC : human liver tissue,
Cited Species: mouse	
Note-IHC: suggested antigen retrieval with TE buffer pH 9.0; (*) Alternatively, antigen retrieval may be performed with citrate buffer pH 6.0	

Background Information

CLYBL, also named as CLB, is a Mitochondrial citramalyl-CoA lyase indirectly involved in the vitamin B12 metabolism (PubMed:29056341). It is a human mitochondrial enzyme of unknown function that is found in multiple eukaryotic taxa and conserved to bacteria. It acts as a beta-methylmalate synthase in vitro, by mediating conversion of glyoxylate and propionyl-CoA to beta-methylmalate. There're two isoforms with MW 31-33 kDa and 35-37 kDa.

Notable Publications

Author	Pubmed ID	Journal	Application
Satabdi Nandi	32092784	Eur J Immunol	WB

Storage

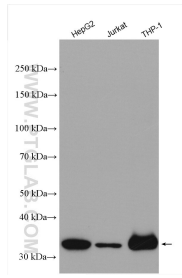
Storage:
Store at -20°C. Stable for one year after shipment.
Storage Buffer:
PBS with 0.02% sodium azide and 50% glycerol pH 7.3.
Aliquoting is unnecessary for -20°C storage

*** 20ul sizes contain 0.1% BSA

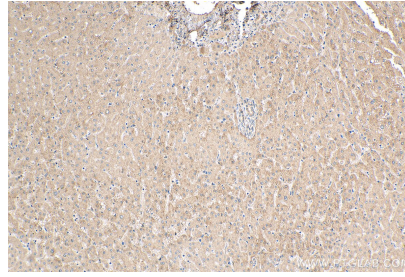
For technical support and original validation data for this product please contact:
T: 1 (888) 4PTGLAB (1-888-478-4522) (toll free in USA), or 1(312) 455-8498 (outside USA)
E: proteintech@ptglab.com
W: ptglab.com

This product is exclusively available under Proteintech Group brand and is not available to purchase from any other manufacturer.

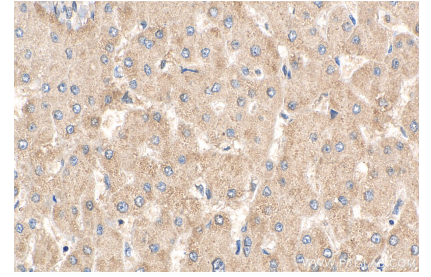
Selected Validation Data



Various lysates were subjected to SDS PAGE followed by western blot with 17314-1-AP (CLYBL antibody) at dilution of 1:2000 incubated at room temperature for 1.5 hours.



Immunohistochemical analysis of paraffin-embedded human liver tissue slide using 17314-1-AP (CLYBL antibody) at dilution of 1:200 (under 10x lens). Heat mediated antigen retrieval with Tris-EDTA buffer (pH 9.0).



Immunohistochemical analysis of paraffin-embedded human liver tissue slide using 17314-1-AP (CLYBL antibody) at dilution of 1:200 (under 40x lens). Heat mediated antigen retrieval with Tris-EDTA buffer (pH 9.0).