

For Research Use Only

RPS4Y1 Polyclonal antibody

Catalog Number: 17296-1-AP



Basic Information

| | | |
|--|---|---|
| Catalog Number: 17296-1-AP | GenBank Accession Number: BC010286 | Purification Method: Antigen affinity purification |
| Size: 150ul , Concentration: 180 µg/ml by Nanodrop and 180 µg/ml by Bradford method using BSA as the standard; | GeneID (NCBI): 6192 | Recommended Dilutions: WB 1:500-1:1000 IF 1:10-1:100 |
| Source: Rabbit | Full Name: ribosomal protein S4, Y-linked 1 | |
| Isotype: IgG | Calculated MW: 263 aa, 29 kDa | |
| Immunogen Catalog Number: AG11176 | Observed MW: 29 kDa | |

Applications

| | |
|--|--|
| Tested Applications: IF, WB, ELISA | Positive Controls: |
| Species Specificity: human, mouse, rat | WB : DU 145 cells, A2780 cells, HeLa cells, mouse ovary tissue, mouse testis tissue, SKOV-3 cells |
| | IF : HepG2 cells, |

Background Information

RPS4Y1, a Y-linked gene in the human, encodes a subunit of ribosomal protein S4, a component of the 40S subunit and 60S subunit. Ribosomal protein S4 is the only ribosomal protein known to be encoded by more than one gene, namely this gene, RPS4Y2 and the ribosomal protein S4, X-linked (RPS4X). RPS4Y maps to a 90-kb segment that has been implicated in Turner syndrome. As a homolog with RPS4X, the antibody can recognize endogenous level of RPS4Y and RPS4X, at 29-32kDa.

Storage

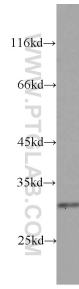
Storage:
Store at -20°C. Stable for one year after shipment.
Storage Buffer:
PBS with 0.02% sodium azide and 50% glycerol pH 7.3.
Aliquoting is unnecessary for -20°C storage

*** 20ul sizes contain 0.1% BSA

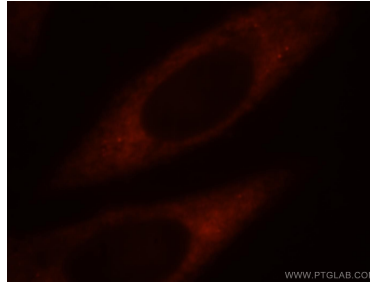
For technical support and original validation data for this product please contact:
T: 1 (888) 4PTGLAB (1-888-478-4522) (toll free in USA), or 1(312) 455-8498 (outside USA)
E: proteintech@ptglab.com
W: ptglab.com

This product is exclusively available under Proteintech Group brand and is not available to purchase from any other manufacturer.

Selected Validation Data



DU 145 cells were subjected to SDS PAGE followed by western blot with 17296-1-AP (RPS4Y1 antibody) at dilution of 1:1000 incubated at room temperature for 1.5 hours.



Immunofluorescent analysis of HepG2 cells, using RPS4Y1 antibody 17296-1-AP at 1:25 dilution and Rhodamine-labeled goat anti-rabbit IgG (red).