

For Research Use Only

SNAPC5 Polyclonal antibody

Catalog Number: 17272-1-AP **1 Publications**



Basic Information

Catalog Number: 17272-1-AP	GenBank Accession Number: BC014315	Purification Method: Antigen affinity purification
Size: 150ul , Concentration: 1000 µg/ml by Nanodrop and 620 µg/ml by Bradford method using BSA as the standard;	GeneID (NCBI): 10302	Recommended Dilutions: WB 1:500-1:1000 IHC 1:20-1:200 IF 1:20-1:200
Source: Rabbit	Full Name: small nuclear RNA activating complex, polypeptide 5, 19kDa	
Isotype: IgG	Calculated MW: 68aa,8 kDa; 98aa,11 kDa	
Immunogen Catalog Number: AG11029	Observed MW: 19 kDa	

Applications

Tested Applications: IF, IHC, WB, ELISA	Positive Controls: WB : HeLa cells,
Cited Applications: IF, IHC, WB	IHC : human testis tissue, human breast cancer tissue, human kidney tissue
Species Specificity: human	IF : HeLa cells,
Cited Species: human	

Note-IHC: suggested antigen retrieval with TE buffer pH 9.0; (*) Alternatively, antigen retrieval may be performed with citrate buffer pH 6.0

Background Information

SNAPC5, also named as SNAP19, is snRNA-activating protein complex 19 kDa. It's a part of the SNAPc complex required for the transcription of both RNA polymerase II and III small-nuclear RNA genes.

Notable Publications

Author	Pubmed ID	Journal	Application
Guoyang Zhang	37441804	Aging (Albany NY)	WB,IHC,IF

Storage

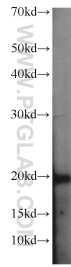
Storage:
Store at -20°C. Stable for one year after shipment.
Storage Buffer:
PBS with 0.02% sodium azide and 50% glycerol pH 7.3.
Aliquoting is unnecessary for -20°C storage

*** 20ul sizes contain 0.1% BSA

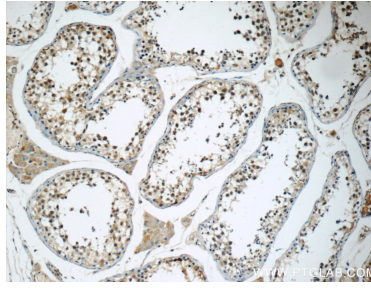
For technical support and original validation data for this product please contact:
T: 1 (888) 4PTGLAB (1-888-478-4522) (toll free in USA), or 1(312) 455-8498 (outside USA)
E: proteintech@ptglab.com
W: ptglab.com

This product is exclusively available under Proteintech Group brand and is not available to purchase from any other manufacturer.

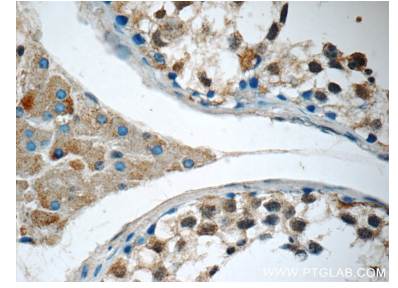
Selected Validation Data



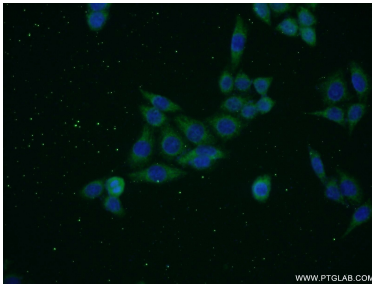
HeLa cells were subjected to SDS PAGE followed by western blot with 17272-1-AP (SNAPC5 antibody) at dilution of 1:500 incubated at room temperature for 1.5 hours.



Immunohistochemical analysis of paraffin-embedded human testis tissue slide using 17272-1-AP (SNAPC5 Antibody) at dilution of 1:50.



Immunohistochemical analysis of paraffin-embedded human testis tissue slide using 17272-1-AP (SNAPC5 Antibody) at dilution of 1:50.



Immunofluorescent analysis of HeLa cells using 17272-1-AP (SNAPC5 antibody) at dilution of 1:50 and Alexa Fluor 488-conjugated AffiniPure Goat Anti-Rabbit IgG(H+L).