

For Research Use Only

# KLHL11 Polyclonal antibody

Catalog Number: 17117-1-AP



## Basic Information

<b>Catalog Number:</b> 17117-1-AP	<b>GenBank Accession Number:</b> BC034470	<b>Purification Method:</b> Antigen affinity purification
<b>Size:</b> 150ul , Concentration: 200 µg/ml by Bradford method using BSA as the standard;	<b>GeneID (NCBI):</b> 55175	<b>Recommended Dilutions:</b> WB 1:200-1:1000
<b>Source:</b> Rabbit	<b>Full Name:</b> kelch-like 11 (Drosophila)	
<b>Isotype:</b> IgG	<b>Calculated MW:</b> 708 aa, 80 kDa	
<b>Immunogen Catalog Number:</b> AG10805	<b>Observed MW:</b> 80 kDa	

## Applications

<b>Tested Applications:</b> WB, ELISA	<b>Positive Controls:</b> WB : COLO 320 cells, MCF-7 cells
<b>Species Specificity:</b> human	

## Background Information

KLHL11 is a component of a cullin-RING-based BCR (BTB-CUL3-RBX1) E3 ubiquitin-protein ligase complex mediating ubiquitination of target proteins. The presence of antibodies directed against KLHL11 has been identified as biomarker of a paraneoplastic neurological syndrome. The downregulation of KLHL11 may contribute to the disease progression, owing to its putative function in protein quality control. The calculated molecular weight of KLHL11 is 80 kDa (PMID: 34312900).

## Storage

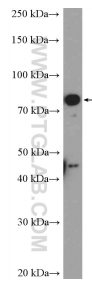
**Storage:**  
Store at -20°C. Stable for one year after shipment.  
**Storage Buffer:**  
PBS with 0.02% sodium azide and 50% glycerol pH 7.3.  
Aliquoting is unnecessary for -20°C storage

**\*\*\* 20ul sizes contain 0.1% BSA**

For technical support and original validation data for this product please contact:  
T: 1 (888) 4PTGLAB (1-888-478-4522) (toll free in USA), or 1(312) 455-8498 (outside USA)  
E: [proteintech@ptglab.com](mailto:proteintech@ptglab.com)  
W: [ptglab.com](http://ptglab.com)

This product is exclusively available under Proteintech Group brand and is not available to purchase from any other manufacturer.

## Selected Validation Data



COLO 320 cells were subjected to SDS PAGE followed by western blot with 17117-1-AP (KLHL11 Antibody) at dilution of 1:300 incubated at room temperature for 1.5 hours.