

For Research Use Only

RWDD1 Polyclonal antibody

Catalog Number: 17036-1-AP **1 Publications**



Basic Information

Catalog Number: 17036-1-AP	GenBank Accession Number: BC015802	Purification Method: Antigen affinity purification
Size: 150ul, Concentration: 300 µg/ml by Nanodrop and 140 µg/ml by Bradford method using BSA as the standard;	GeneID (NCBI): 51389	Recommended Dilutions: WB 1:500-1:3000 IP 0.5-4.0 ug for IP and 1:200-1:1000 for WB IHC 1:50-1:500
Source: Rabbit	Full Name: RWD domain containing 1	
Isotype: IgG	Calculated MW: 243 aa, 28 kDa	
Immunogen Catalog Number: AG10525	Observed MW: 28-36 kDa	

Applications

Tested Applications: IHC, IP, WB, ELISA	Positive Controls: WB: HEK-293 cells, mouse thymus tissue, HeLa cells, Jurkat cells, rat thymus tissue IP: mouse thymus tissue, IHC: mouse kidney tissue,
Cited Applications: IHC, WB	
Species Specificity: human, mouse, rat	
Cited Species: mouse	
Note-IHC: suggested antigen retrieval with TE buffer pH 9.0; (*) Alternatively, antigen retrieval may be performed with citrate buffer pH 6.0	

Background Information

RWDD1(RWD domain-containing protein 1) is also named as DFRP2(DRG family-regulatory protein 2) and belongs to the RWDD1/GIR2 family. RWDD1 is a thymus aging-related protein which contains an RWD domain at its N-terminus and it is expressed in both thymocytes and thymic epithelial cells and located primarily in the cytoplasm. This protein expression in thymus is decreased in aged and oxidatively stressed mice (PMID:18954556). RWDD1 has a calculated molecular mass of 28 kDa, and apparent molecular mass of 32-36 kDa due to its high acidic amino acid composition that results in the slowed migration behavior in electrophoresis (PMID: 30278355, 18954556).

Notable Publications

Author	Pubmed ID	Journal	Application
Gr?tsch Helga H	22406838	Mol Cell Endocrinol	WB,IHC

Storage

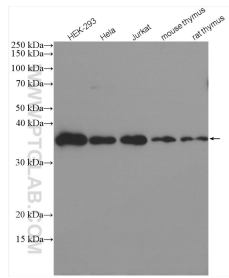
Storage:
Store at -20°C. Stable for one year after shipment.
Storage Buffer:
PBS with 0.02% sodium azide and 50% glycerol pH 7.3.
Aliquoting is unnecessary for -20°C storage

*** 20ul sizes contain 0.1% BSA

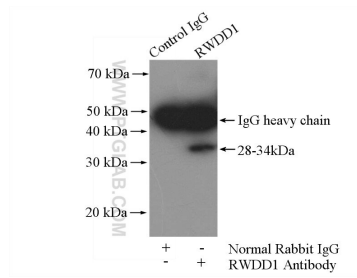
For technical support and original validation data for this product please contact:
T: 1 (888) 4PTGLAB (1-888-478-4522) (toll free in USA), or 1(312) 455-8498 (outside USA)
E: proteintech@ptglab.com
W: ptglab.com

This product is exclusively available under Proteintech Group brand and is not available to purchase from any other manufacturer.

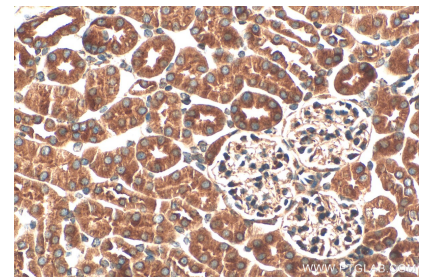
Selected Validation Data



Various lysates were subjected to SDS PAGE followed by western blot with 17036-1-AP (RWDD1 antibody) at dilution of 1:1500 incubated at room temperature for 1.5 hours.



IP Result of anti-RWDD1 (IP:17036-1-AP, 4 μ g; Detection:17036-1-AP 1:300) with mouse thymus tissue lysate 2800 μ g.



Immunohistochemical analysis of paraffin-embedded mouse kidney tissue slide using 17036-1-AP (RWDD1 antibody) at dilution of 1:200 (under 40x lens). Heat mediated antigen retrieval with Tris-EDTA buffer (pH 9.0).