

For Research Use Only

MRPL21 Polyclonal antibody

Catalog Number: 16978-1-AP



Basic Information

Catalog Number: 16978-1-AP	GenBank Accession Number: BC055088	Purification Method: Antigen affinity purification
Size: 150ul, Concentration: 400 µg/ml by Nanodrop and 187 µg/ml by Bradford method using BSA as the standard;	GeneID (NCBI): 219927	Recommended Dilutions: WB 1:500-1:1000 IHC 1:20-1:200
Source: Rabbit	Full Name: mitochondrial ribosomal protein L21	
Isotype: IgG	Calculated MW: 209 aa, 23 kDa	
Immunogen Catalog Number: AG9807	Observed MW: 23 kDa	

Applications

Tested Applications: IHC, WB, ELISA	Positive Controls: WB : COLO 320 cells, HCT 116 cells
Species Specificity: human, mouse, rat	IHC : human liver tissue,
Note-IHC: suggested antigen retrieval with TE buffer pH 9.0; (*) Alternatively, antigen retrieval may be performed with citrate buffer pH 6.0	

Background Information

Storage

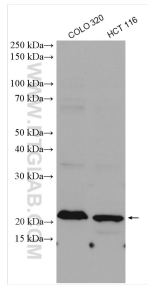
Storage:
Store at -20°C. Stable for one year after shipment.
Storage Buffer:
PBS with 0.02% sodium azide and 50% glycerol pH 7.3.
Aliquoting is unnecessary for -20°C storage

*** 20ul sizes contain 0.1% BSA

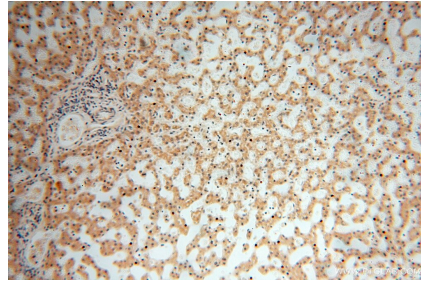
For technical support and original validation data for this product please contact:
T: 1 (888) 4PTGLAB (1-888-478-4522) (toll free in USA), or 1(312) 455-8498 (outside USA) E: proteintech@ptglab.com
W: ptglab.com

This product is exclusively available under Proteintech Group brand and is not available to purchase from any other manufacturer.

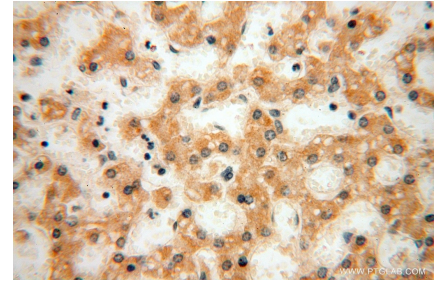
Selected Validation Data



Various lysates were subjected to SDS PAGE followed by western blot with 16978-1-AP (MRPL21 antibody) at dilution of 1:600 incubated at room temperature for 1.5 hours.



Immunohistochemical analysis of paraffin-embedded human liver using 16978-1-AP (MRPL21 antibody) at dilution of 1:100 (under 10x lens).



Immunohistochemical analysis of paraffin-embedded human liver using 16978-1-AP (MRPL21 antibody) at dilution of 1:100 (under 40x lens).