

For Research Use Only

CPLX3 Polyclonal antibody

Catalog Number: 16949-1-AP **2 Publications**



Basic Information

Catalog Number: 16949-1-AP	GenBank Accession Number: BC018026	Purification Method: Antigen affinity purification
Size: 150ul , Concentration: 800 µg/ml by Nanodrop;	GeneID (NCBI): 594855	Recommended Dilutions: WB 1:1000-1:4000 IP 0.5-4.0 ug for IP and 1:200-1:1000 for WB
Source: Rabbit	Full Name: complexin 3	
Isotype: IgG	Calculated MW: 158 aa, 18 kDa	
Immunogen Catalog Number: AG10571	Observed MW: 20-23 kDa	

Applications

Tested Applications: IP, WB, ELISA	Positive Controls:
Cited Applications: IHC, WB	WB : mouse brain tissue, human brain tissue
Species Specificity: human, mouse, rat	IP : mouse brain tissue,
Cited Species: mouse	

Background Information

CPLX3, also named as Complexin-3, is 158 amino acid protein, which belongs to the complexin/synaphin family. CPLX3 localizes in the membrane and binds to the SNARE core complex containing SNAP25, VAMP2 and STX1A. CPLX3 positively regulates a late step in synaptic vesicle exocytosis.

Notable Publications

Author	Pubmed ID	Journal	Application
María Pedraza	24778253	Proc Natl Acad Sci U S A	IHC
Wang Ziyang Z	23982049	Free Radic Biol Med	WB

Storage

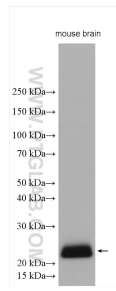
Storage:
Store at -20°C. Stable for one year after shipment.
Storage Buffer:
PBS with 0.02% sodium azide and 50% glycerol pH 7.3.
Aliquoting is unnecessary for -20°C storage

***** 20ul sizes contain 0.1% BSA**

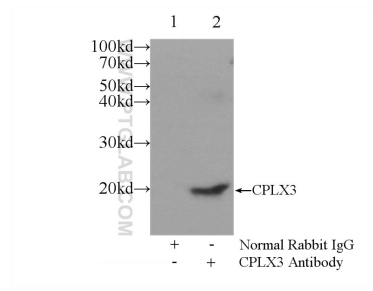
For technical support and original validation data for this product please contact:
T: 1 (888) 4PTGLAB (1-888-478-4522) (toll free in USA), or 1(312) 455-8498 (outside USA) E: proteintech@ptglab.com W: ptglab.com

This product is exclusively available under Proteintech Group brand and is not available to purchase from any other manufacturer.

Selected Validation Data



mouse brain tissue were subjected to SDS PAGE followed by western blot with 16949-1-AP (CPLX3 antibody) at dilution of 1:2000 incubated at room temperature for 1.5 hours.



IP Result of anti-CPLX3 (IP:16949-1-AP, 3ug; Detection:16949-1-AP 1:300) with mouse brain tissue lysate 6000ug.