

For Research Use Only

# RPS21 Polyclonal antibody

Catalog Number: 16946-1-AP

Featured Product

3 Publications



## Basic Information

<b>Catalog Number:</b> 16946-1-AP	<b>GenBank Accession Number:</b> BC018140	<b>Purification Method:</b> Antigen affinity purification
<b>Size:</b> 150ul , Concentration: 550 µg/ml by Nanodrop;	<b>GeneID (NCBI):</b> 6227	<b>Recommended Dilutions:</b> WB 1:500-1:1000 IHC 1:50-1:500 IF 1:50-1:500
<b>Source:</b> Rabbit	<b>Full Name:</b> ribosomal protein S21	
<b>Isotype:</b> IgG	<b>Calculated MW:</b> 81 aa, 9 kDa	
<b>Immunogen Catalog Number:</b> AG10557	<b>Observed MW:</b> 9 kDa	

## Applications

### Tested Applications:

IF, IHC, WB, ELISA

### Cited Applications:

IHC, WB

### Species Specificity:

human, rat, mouse

### Cited Species:

human, mouse

**Note-IHC: suggested antigen retrieval with TE buffer pH 9.0; (\*) Alternatively, antigen retrieval may be performed with citrate buffer pH 6.0**

### Positive Controls:

**WB:** mouse liver tissue, HepG2 cells, SGC-7901 cells, HeLa cells, rat liver tissue

**IHC:** human liver cancer tissue,

**IF:** HepG2 cells,

## Background Information

Ribosomes, the organelles that catalyze protein synthesis, consist of a small 40S subunit and a large 60S subunit. Together these subunits are composed of 4 RNA species and approximately 80 structurally distinct proteins. This gene encodes a ribosomal protein that is a component of the 40S subunit.

## Notable Publications

Author	Pubmed ID	Journal	Application
Shutong Fan	30405806	Oncol Lett	IHC
Natsuki Nakanishi	36194357	Reprod Sci	IHC
Zumu Liang	31089825	Med Oncol	WB,IHC

## Storage

### Storage:

Store at -20°C. Stable for one year after shipment.

### Storage Buffer:

PBS with 0.02% sodium azide and 50% glycerol pH 7.3.

Aliquoting is unnecessary for -20°C storage

\*\*\* 20ul sizes contain 0.1% BSA

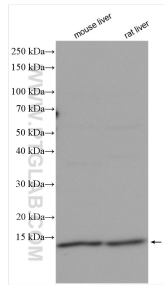
For technical support and original validation data for this product please contact:

T: 1 (888) 4PTGLAB (1-888-478-4522) (toll free in USA), or 1(312) 455-8498 (outside USA)

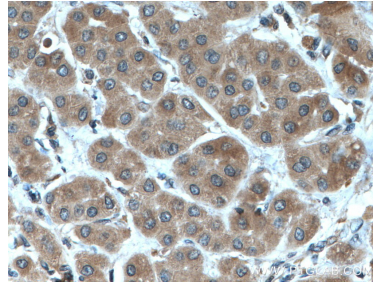
E: [proteintech@ptglab.com](mailto:proteintech@ptglab.com)  
W: [ptglab.com](http://ptglab.com)

**This product is exclusively available under Proteintech Group brand and is not available to purchase from any other manufacturer.**

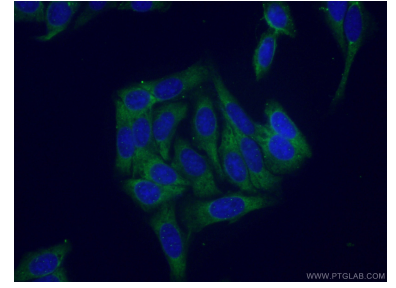
## Selected Validation Data



Various lysates were subjected to SDS PAGE followed by western blot with 16946-1-AP (RPS21 antibody) at dilution of 1:800 incubated at room temperature for 1.5 hours.



Immunohistochemical analysis of paraffin-embedded human liver cancer tissue slide using 16946-1-AP (RPS21 antibody) at dilution of 1:200 (under 40x lens. Heat mediated antigen retrieval with Tris-EDTA buffer (pH 9.0).



Immunofluorescent analysis of (-20°C Ethanol) fixed HepG2 cells using 16946-1-AP (RPS21 antibody) at dilution of 1:50 and Alexa Fluor 488-conjugated AffiniPure Goat Anti-Rabbit IgG(H+L).